

I-59 South Industrial Site

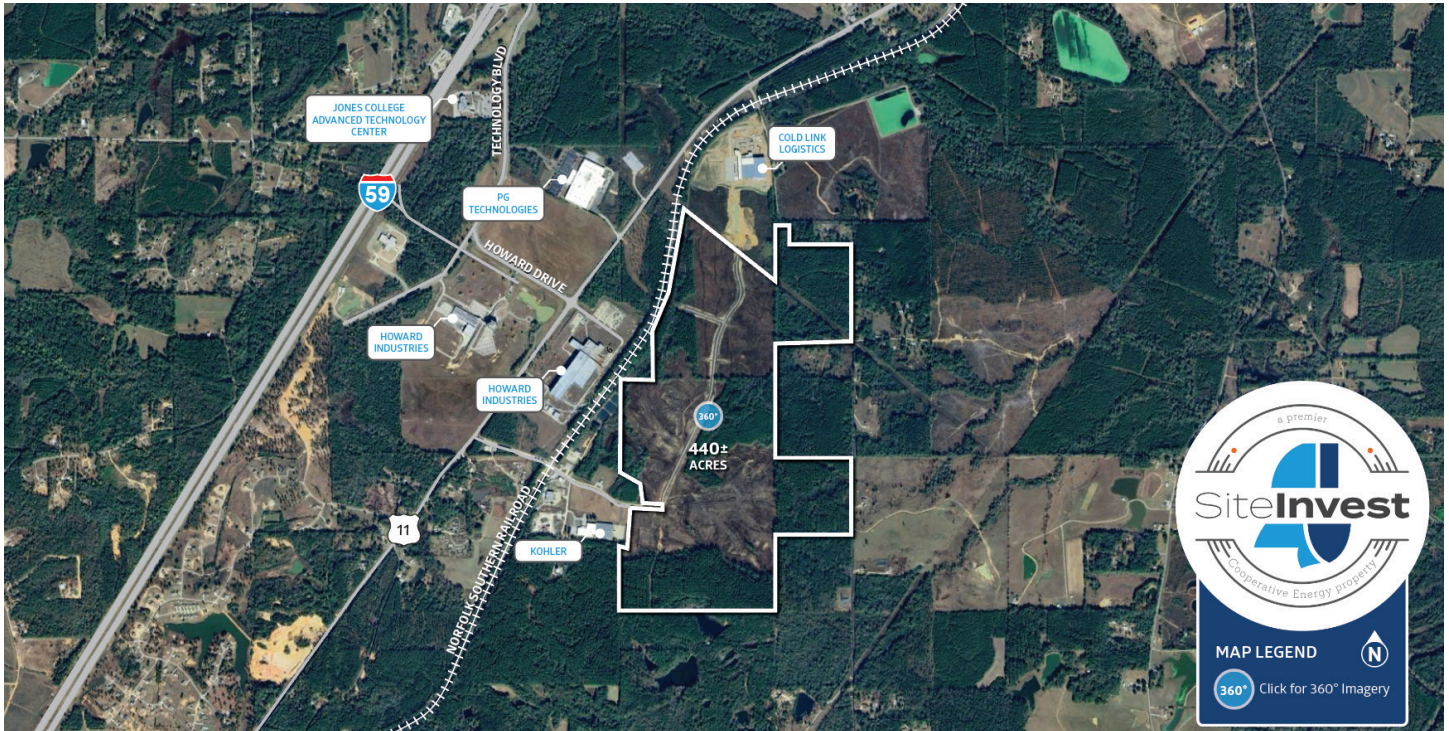


ECONOMIC
DEVELOPMENT

Dacetown Rd & Highway 11, Ellisville, Mississippi (Jones County)
31.56998, -89.22578

PROPERTY OVERVIEW

The I-59 Industrial Site, a [Cooperative Energy SiteInvest Premier Property](#), is 440+/- acres adjacent to Highway 11 in Ellisville, Mississippi. The site has dual feed electrical service provided by Mississippi Power Company on the north portion and Dixie Electric Power Association on the South. Norfolk Southern Railroad mainline serves the site. Jones County Junior College's Advanced Training Center is in the adjacent Technology Park. The University of Southern Mississippi's Polymer Science Institute is only minutes south of the site, and countless amenities are offered in nearby Laurel and Hattiesburg Metro Area.



Acreage

440



Property Type

Industrial



Ownership

Publicly Owned



Rail

On-Site



Site Video

[Click to View.](#)

Site Information

- **Total Acres:** 440
- **Ownership:** Publicly Owned
- **Zoning:** Industrial
- **Previous Use:** Industrial/Agriculture
- **Topography:** Flat to Gentle Slope
- **Flood Plain:** No
- **Reports & Surveys Available:** Phase 1 Environmental, Endangered Species Review, Cultural Resources Report, Geotechnical Report, Wetlands Survey
- **Property Advantages:** [Cooperative Energy SiteInvest Premier Property](#); Dual Electric Service Providers; Rail Access - Norfolk Southern; Close Proximity to Interstate 59; Local Funds available for site prep or other project needs

Transportation

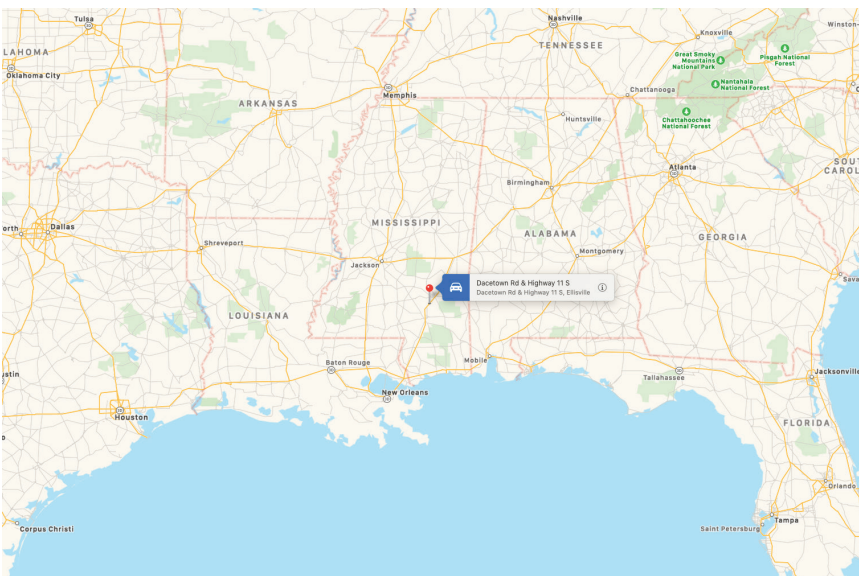
- **Interstate Name:** I-59 (2 miles)
- **Highway Name:** US Hwy 11 (0.01 miles); MS Hwy 590 (1 mile)
- **Airports:** Hattiesburg-Laurel Regional Airport ((PIB) 9 miles)
- **Port:** Port of Gulfport (90 miles)
- **Rail:** Norfolk Southern Railroad (0.01 mile)

Utilities

- **Electric Provider:** Cooperative Energy/Dixie Electric & Mississippi Power
- **Transmission Voltage:** 69kV
- **Natural Gas Provider:** Delta Utilities
- **Gas Main Size:** 6 inch
- **Gas Pressure:** 60 psi
- **Water Provider:** City of Ellisville
- **Water Main Size:** 12 inch
- **Water System Capacity:** 1.5 MGD
- **Excess Water Capacity:** 500,000 GD
- **Sewer Provider:** City of Ellisville
- **Sewer Main Size:** 10 inch
- **Sewer System Capacity:** 980,000 GD
- **Excess Wastewater Capacity:** 300,000 GD
- **Telecommunications Provider:** AT&T (DSL & Fiber Available)

Documents

- [Economic Overview: I-59 South Industrial Site 45 minute drive-time](#)
- [Site Map](#)
- [Electrical Map](#)
- [Dual Feed Electrical Service Territory Map](#)
- [Utilities Map](#)



Contact

Ross Tucker

Economic Development Authority
of Jones County
228.769.6263
rosst@edajones.com

Mitch Stringer

Cooperative Energy
601.705.1349
mstringer@cooperativeenergy.com