

I-59 Supply Chain Park

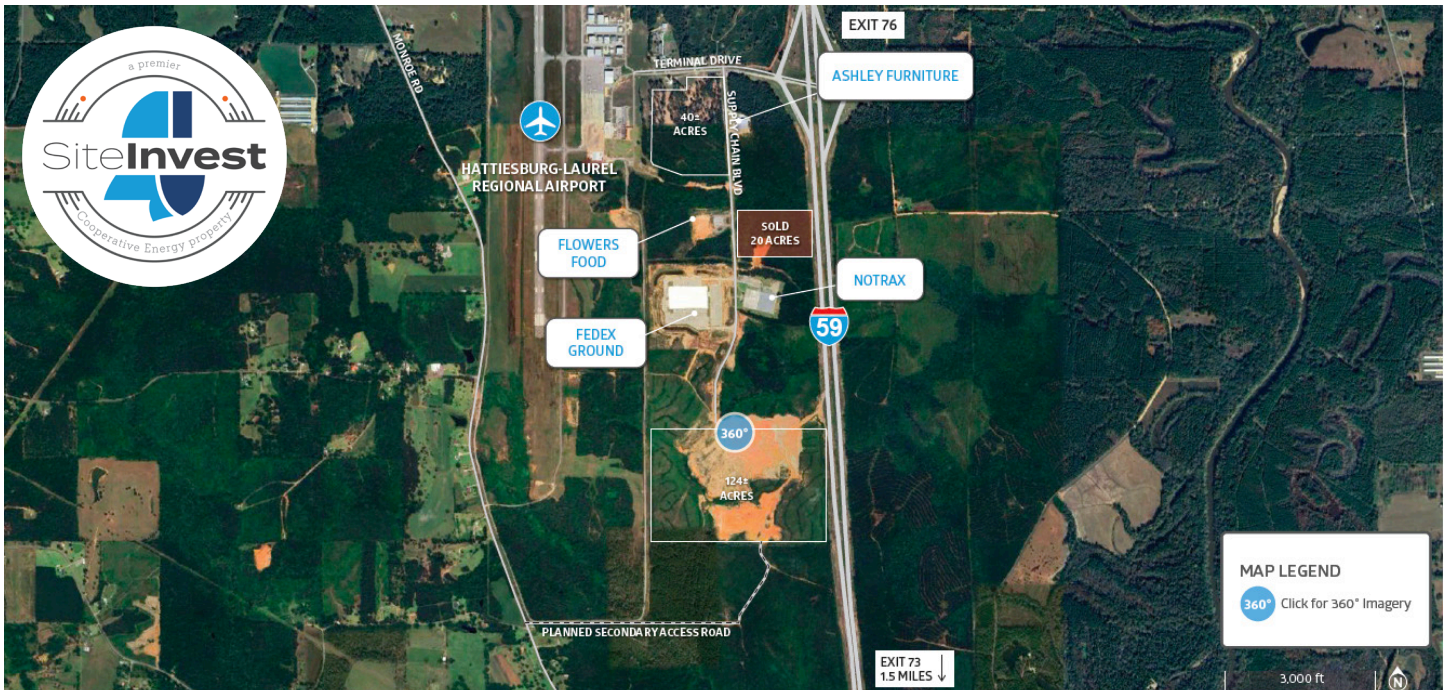
1002 Terminal Drive, Moselle, Mississippi 39459
31.452772, -89.327189



ECONOMIC
DEVELOPMENT

PROPERTY OVERVIEW

The I-59 Supply Chain Park, a [Cooperative Energy SiteInvest Premier Property](#), is located adjacent to Interstate 59 between Laurel and Hattiesburg, and offers 164 acres with interstate frontage. It is owned and managed by the Airport Authority, and all utilities are located within the park. Although it is located in Jones County, it is funded by both Jones and Forest County's Boards of Supervisors. Both counties have made a commitment to assist prospects, when certain requirements are met, with infrastructure improvements. The airport runway is 6,501 feet long and 150 feet wide and offers both commercial and general aviation services. Being located adjacent to the interstate, access to the airport, and within minutes of customized training at the University of Southern Mississippi's Polymer Science Department and Jones County Junior College's Advanced Technology Training Center makes this park perfect for aerospace companies, distribution facilities, and polymer-related manufacturers.



Acreage

164 Total Acres



Property Type

Light Industrial



Ownership

Publicly Owned



Site Video

Click to View

Site Information

- **Total Acres:** 164
- **Ownership:** Publicly
- **Zoning:** Light Industrial
- **Topography:** Gently Rolling
- **Flood Plain:** No
- **Reports & Surveys Available:** Phase 1 Environmental, Geotechnical Report, Wetlands Delineation, Cultural Resources Survey
- **Property Advantages:** [Cooperative Energy SiteInvest Premier Property](#); 197 Acres Cleared; Interstate 59 Frontage; Incentives Offered by Forrest and Jones Counties; Updated Due Diligence

Transportation

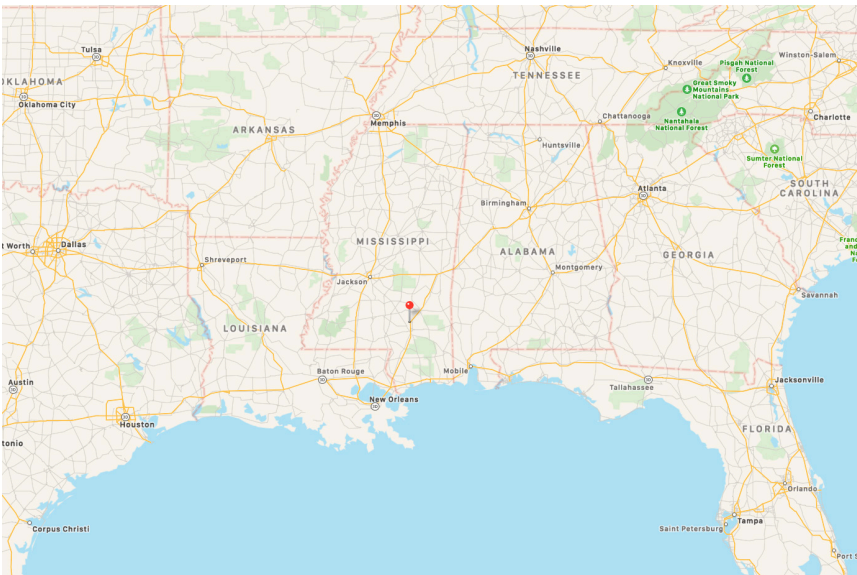
- **Interstate Name:** I-59 (6,000 ft); I-20 (73 miles); I-10 (78 miles)
- **Highway Name:** U.S. Hwy 49 (8 miles); US Hwy 98 (10 miles); U.S. Hwy 84 (21 miles)
- **Airports:** Hattiesburg-Laurel Regional Airport ((PIB) Adjacent)
- **Port:** Port of Gulfport (83 miles)

Utilities

- **Electric Provider:** Cooperative Energy/Dixie Electric
- **Transmission Voltage:** 115kV
- **Distance to Nearest Substation:** 0.5 miles (within industrial park)
- **Natural Gas Provider:** Spire Energy
- **Gas Main Size:** 4 inch
- **Gas Pressure:** 40 psi
- **Water Provider:** Hattiesburg-Laurel Regional Airport via the Southwest Jones Water Association
- **Water Main Size:** 16 inch
- **Sewer Provider:** Hattiesburg-Laurel Regional Airport Authority
- **Sewer Main Size:** 4 inch
- **Telecommunications Provider:** AT&T & CSpire

Documents

- **Economic Overview:** I-59 Supply Chain Park 45 minute drive-time
- **Site Map**
- **Electrical Infrastructure Map**
- **Utilities Map**



Contact

Ross Tucker

Economic Development Authority of
Jones County
601.649.3031
rosst@edajones.com

Mitch Stringer

Cooperative Energy
601.705.1349
mstringer@cooperativeenergy.com