

# Agribusiness

Forest Products | Food & Beverage | Agriculture

## Why Mississippi for Agribusiness?

Agriculture is Mississippi's largest industry. With 10.4 million acres of farmland, agriculture is a \$6.22 billion industry in the state, employing approximately 17.4% of the state's workforce directly or indirectly. Forest resources are also a major component of Mississippi's economic base covering more than 19.8 million forested acres, or 65% of the state's total land area. The state's growing agribusiness industry includes small- and large-scale private farms, food and beverage producers, forest products growers and producers, and nearly every supply chain component in between. This vast agriculture-related network, combined with the fertile soil and temperate climate, make Mississippi ripe for agribusiness.



Mississippi ranks in the **Top 20** in the production of **15** agricultural commodities



**77%** of forested acres are privately owned



**~35,000** farms in Mississippi



MISSISSIPPI IS A  
**RIGHT-TO-  
WORK  
STATE**

### High Demand Agribusiness Occupations

Occupation	Mississippi		
	Employment	Average Wage	National Average Wage
Farmers, Ranchers, and Other Agricultural Managers	10,972	\$41,600	\$75,200
Farmworkers and Laborers, Crop, Nursery, and Greenhouse	2,429	\$33,500	\$36,000
Packaging and Filling Machine Operators and Tenders	3,257	\$33,200	\$41,400
Laborers and Freight, Stock, and Material Movers, Hand	30,255	\$33,600	\$39,700
Food Batchmakers	520	\$35,700	\$40,900
Farmworkers, Farm, Ranch, and Aquacultural Animals	1,434	\$40,100	\$37,100
First-Line Supervisors of Production and Operating Workers	8,603	\$69,400	\$73,400
Meat, Poultry, and Fish Cutters and Trimmers	6,905	\$34,400	\$36,700
Industrial Truck and Tractor Operators	8,411	\$39,700	\$45,700
Packers and Packagers, Hand	5,423	\$27,400	\$35,100

Source: JobsEQ, Data as of 2024Q1.



## Incentives

The **Agribusiness Enterprise (ABE) Loan Program** provides loans through financial institutions to agriculture-related businesses in Mississippi. The ABE Loan Program allows for loans in the amount up to 20% of total project costs or \$200,000, whichever is less.

New or expansion projects investing more than \$60 million may qualify for a **fee-in-lieu of property taxes**. The negotiated fee may be awarded for up to 10 years but cannot be less than one-third of the property tax levy. For projects with new investment less than \$60 million, a **standard property tax exemption** may be available. The exemption may be awarded for up to 10 years, and reduces a portion of taxes, excluding school taxes.

The **Advantage Jobs Program** provides a cash rebate of a percentage of Mississippi payroll to qualified manufacturers for a period of up to 10 years. Companies are deemed eligible based on the average wage paid to employees.

The **Research and Development Skills Tax Credits** are equal to \$1,000 per employee per year for a five-year period that can be used to reduce an eligible entity's income tax liability. These credits are available for any position requiring research or development skills.

## Research and Development Partners



Mississippi State University

The **Division of Agriculture, Forestry and Veterinary Medicine** at Mississippi State University operates 16 branch experiment stations that each focus on a field of study, ranging from cattle production, to exploratory seafood processing, to truck crops.

The **Northern Gulf Aquatic Food Research Center**, a multi-million-dollar facility under construction in Ocean Springs, is the first of its kind on the Mississippi Coast. The three-phase center will provide the Gulf Coast seafood industry with robust safety testing and quality assurance.



United States Department of Agriculture

The **Jamie Whitten Delta States Research Center** researches areas including genetics and basic physiology, control of principal crops enemies, production systems and techniques, equipment innovation and development, safety and human health, and technology of pesticide application.



Alcorn State University

The **School of Agriculture, Research, Extension and Applied Sciences** prepares graduate and undergraduate students in the areas of agriculture and applied science.



For more information on the agribusiness industry, contact a Cooperative Energy Economic Development team member or visit [www.CooperativeEnergy.com](http://www.CooperativeEnergy.com)



ECONOMIC  
DEVELOPMENT

# Agribusiness Property Spotlight

## LINBROOK INDUSTRIAL PARK



Located midway between New Orleans, Louisiana, and Jackson, Mississippi, the Linbrook Business Park is in Brookhaven, Mississippi. The 400-acre industrial park has large greenfield parcels available for development, as well as two state of the art industrial buildings. A carbon dioxide line is located within the industrial park.

- New Market Tax Credit and Opportunity Zone eligible
- Available buildings:
  - » Brookhaven Spec Building #2:
    - 50,000 SF expandable to 150,000 SF
    - Year built: 2021
    - Column spacing: 50' x 125'

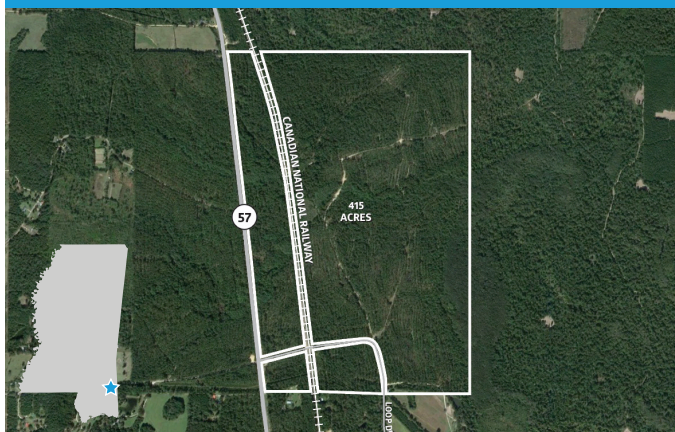
## TAYLORSVILLE INDUSTRIAL SITE



The Taylorsville Industrial Site is in Smith County, Mississippi. The site has a total of 200+ acres available for development, with all environmental due diligence complete and up to date. Taylorsville is in the Pine Belt in east central Mississippi.

- 200 acres, largest contiguous tract +/- 120 acres
- All environmental due diligence complete
- Rail: Canadian National industrial lead track
- Existing forest products supply chain in region
- New Market Tax Credit eligible

## GREENE COUNTY RAIL SITE



The Greene County Rail Site is an available property located in southeast Mississippi just south of the town of McLain in Greene County. This 415+/- acre site is adjacent to the Canadian National Railroad and Mississippi Highway 57. The site is owned by Greene County and under the control of the Greene County Board of Education, operated as 16th Section Land.

- 415 acres, largest contiguous tracts +/- 100 acres
- Rail: Canadian National
- 60 miles trucking distance to Port of Pascagoula with existing forest products export capabilities
- Forestry is the largest industry in Greene County