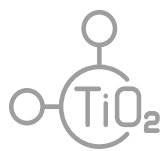


Advanced Materials

Chemicals | Plastics | Rubber | Metals

Why Mississippi for Advanced Materials?

An intermodal transportation system of rail, port, air, and interstate allow Mississippi companies to make, service, transport, or add value to even the most complex advanced materials. Four Foreign Trade Zones throughout the state offer duty and excise tax benefits, and three navigable waterways border Mississippi, providing access to national and international markets. Three of the top five state exports are advanced materials including: petroleum oils, pigments/titanium dioxide, and light petroleum oils. Additionally, the state has more than 13,000 miles of interstate pipeline transporting an abundance of crude oil, natural gas, and refined petroleum products. In Mississippi, businesses have the resources and infrastructure to remain competitive in today's economy.



Mississippi is the leading origin state in the U.S. for export of **titanium dioxide pigments.**



18,896 are employed in Advanced Materials occupations in Mississippi as of 2023.



MISSISSIPPI IS A
**RIGHT-TO-
WORK**
STATE

High Demand Advanced Materials Manufacturing Occupations

Occupation	Mississippi		
	Employment	Average Wage	National Average Wage
Chemical Equipment Operators and Tenders	1,117	\$55,100	\$57,500
First-Line Supervisors of Production and Operating Workers	8,603	\$69,400	\$73,400
Molding, Coremaking, and Casting Machine Setters, Operators, and Tenders, Metal and Plastic	759	\$38,300	\$42,100
Inspectors, Testers, Sorters, Samplers, and Weighers	6,978	\$42,700	\$50,400
Packaging and Filling Machine Operators and Tenders	3,257	\$33,200	\$41,400
Team Assemblers	15,243	\$39,300	\$42,900
Extruding and Drawing Machine Setters, Operators, and Tenders, Metal and Plastic	688	\$40,500	\$45,300
Industrial Machinery Mechanics	5,192	\$61,400	\$65,000
Laborers and Freight, Stock, and Material Movers, Hand	30,255	\$33,600	\$39,700
Cutting, Punching, and Press Machine Setters, Operators, and Tenders, Metal and Plastic	1,805	\$39,400	\$44,700

Source: JobsEQ, Data as of 2024Q1.



Incentives

New or expansion projects investing more than \$60 million may qualify for a **fee-in-lieu of property taxes**. The negotiated fee may be awarded for up to 10 years, but cannot be less than one-third of the property tax levy. For projects with new investment less than \$60 million, a **standard property tax exemption** may be available. The exemption may be awarded for up to 10 years, and reduces a portion of taxes, excluding school taxes.

The **Advantage Jobs Program** provides a cash rebate of a percentage of Mississippi payroll to qualified manufacturers for a period of up to 10 years. Companies are deemed eligible based on the average wage paid to employees.

The **Research and Development Skills Tax Credits** are equal to \$1,000 per employee per year for a five-year period that can be used to reduce an eligible entity's income tax liability. These credits are available for any position requiring research or development skills.

Raw materials and **electricity** used in the manufacturing process are **exempt from state sales tax**.

Mississippi's average **industrial price of electricity** is **12% below** the national average.

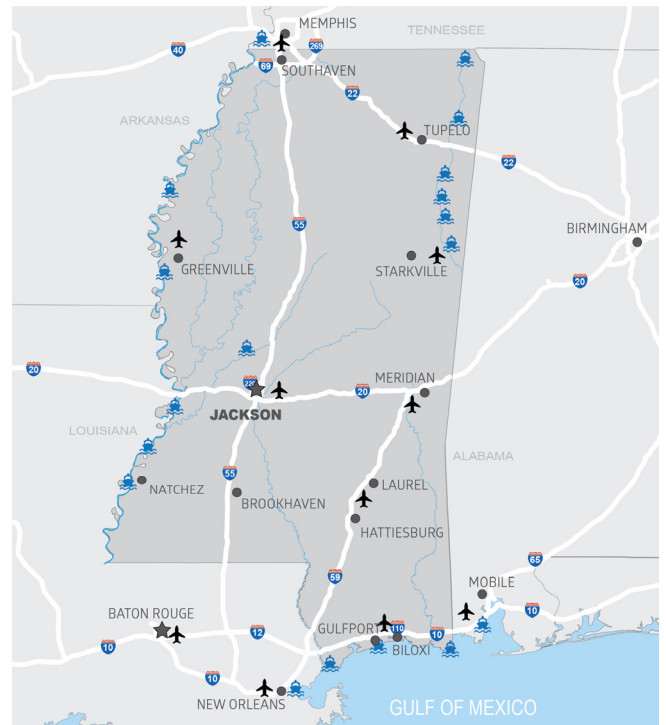
Source: EIA, 2023

Research and Development Partners



The University of Southern Mississippi

The Mississippi Polymer Institute (MPI) offers full-service technical and scientific resources for polymer-based materials industries. MPI was established in 1993 with a goal of growing high-tech polymer and polymer-related industries in the state. MPI provided all training for GE Aviation, Ellisville composites and most recently PG Technologies.



For more information on the advanced materials industry, contact a Cooperative Energy Economic Development team member or visit www.CooperativeEnergy.com



ECONOMIC
DEVELOPMENT

Advanced Materials Property Spotlight

HELENA INDUSTRIAL COMPLEX



Helena Industrial Complex, a Canadian National (CN) Certified Rail Ready Site, is located on the Mississippi Gulf Coast in Jackson County, 7 miles north of the City of Moss Point. The property is five miles north of Interstate 10 and four miles east of four-lane Mississippi Highway 63. The park is served by the Mississippi Export Railroad which interconnects to CN, CSX, KCS and NS railroads.

- Parcel size: 45 acres with 40 additional acres for expansion
- CN Certified Rail Ready site with Mississippi Export Railroad spur on-site
- Direct rail access to export Port of Pascagoula
- Environmental due diligence complete, including pre-permitting for wetlands
- New electric substation at entrance to industrial complex

PORT BIENVILLE INDUSTRIAL PARK



Port Bienville Industrial Park has more than 3,600 acres of available property for heavy industrial development and is home to 14 leading companies carving out exceptional success across diverse sectors. Port Bienville connects tenant operations to ports along the Gulf Coast Intercoastal Waterway, including the Port of New Orleans, opening Mississippi River routes and deep-water global access. The Park's shortline rail connects to CSX which offers access to virtually the entire eastern U.S., while heavy-haul trucking roads move goods to multiple connections including Interstates 10, 12, 59 and U.S. Highways 49 and 90 for nationwide coverage.

- Parcel size: 13 to 1,000+ acres
- Shallow draft barge dock
- Shortline railroad connecting to CSX
- All environmental due diligence complete

GATEWAY INDUSTRIAL PARK



The Gateway Industrial Park is a 210± acre site located in Pike County, Mississippi, approximately 3 miles south of the city of McComb. This publicly owned site has Interstate 55 frontage and is New Markets Tax Credit and Opportunity Zone eligible.

- All 210± acres cleared
- All environmental due diligence complete
- Approximately 90 miles from four metropolitan areas: Baton Rouge, La., New Orleans, La., Jackson, Miss., and Hattiesburg, Miss.

Advanced Materials Property Spotlight

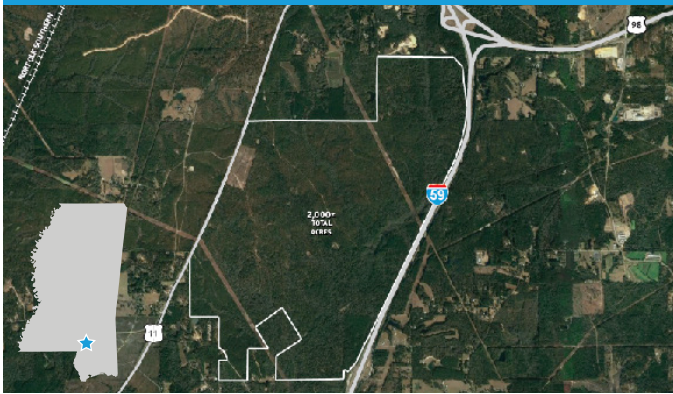
I-59 SOUTH INDUSTRIAL SITE



The I-59 Industrial Site is 446+/- acres adjacent to U.S. Highway 11 in Ellisville, Mississippi. The site has dual feed electrical service provided by Mississippi Power Company on the north portion and Dixie Electric Power Association on the south. Norfolk Southern Railroad mainline serves the site. Jones College's Advanced Training Center is in the adjacent Technology Park. The University of Southern Mississippi's Polymer Science Institute is only minutes south of the site, and countless amenities are offered in nearby Laurel and Hattiesburg Metro Area.

- Parcel size: 50 to 446 acres
- All environmental due diligence complete
- Rail: Norfolk Southern
- New Market Tax Credit eligible

EAGLE ONE MEGA SITE



Located in unincorporated Forrest and Lamar counties, the Eagle One Mega Site is 2,222± acres and just minutes away from the Hattiesburg city limits. The site is intended for large industrial land users considering substantial facilities requiring major capital expenditures and significant employment levels.

- Parcel size: 100 to 2,000+ acres
- New Market Tax Credit eligible
- Located in one of the fastest growing metro areas in the region
- All environmental due diligence complete
- Rail: Norfolk Southern