

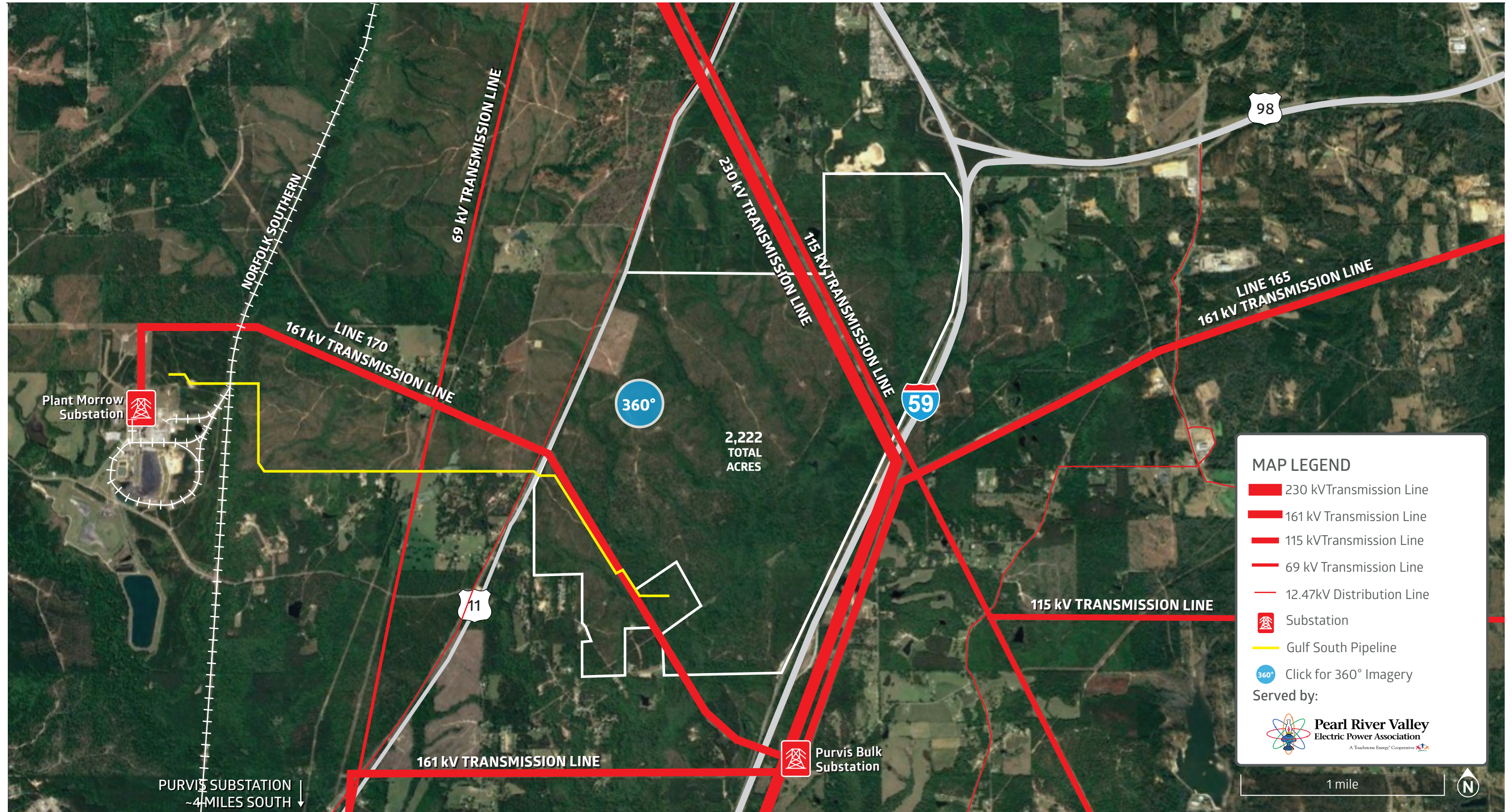
# Eagle One Mega Site | Electrical Infrastructure

Hattiesburg, Mississippi (Forrest/Lamar Counties)

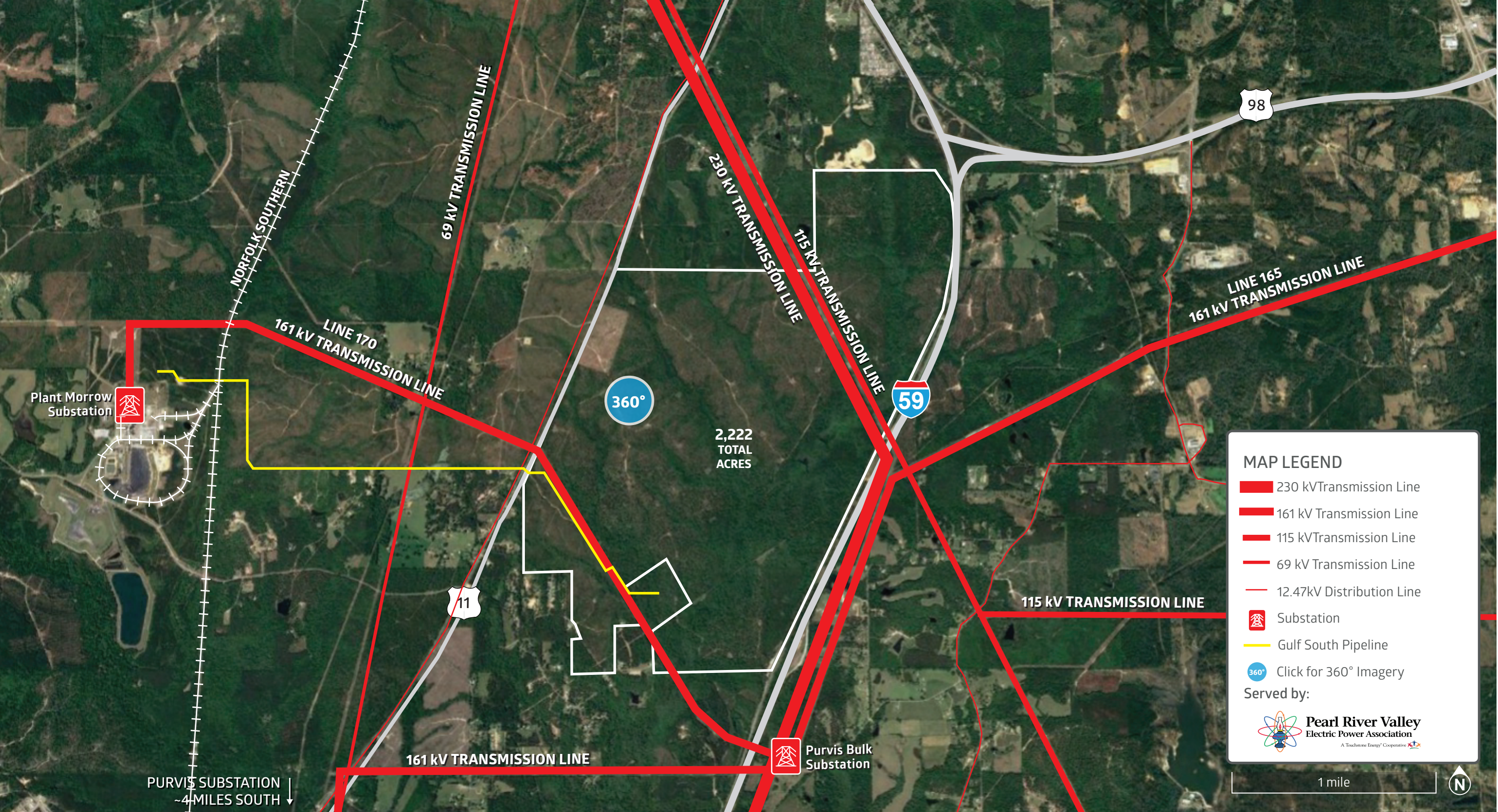
31.21994, -89.34097



ECONOMIC DEVELOPMENT







98






59

11

360°

2,222  
TOTAL  
ACRES

### MAP LEGEND

-  230 kV Transmission Line
-  161 kV Transmission Line
-  115 kV Transmission Line
-  69 kV Transmission Line
-  12.47kV Distribution Line



Substation



Gulf South Pipeline



Click for 360° Imagery

Served by:



**Pearl River Valley**  
Electric Power Association  
A Touchstone Energy Cooperative

1 mile



Plant Morrow  
Substation

Purvis Bulk  
Substation

PURVIS SUBSTATION  
~4 MILES SOUTH ↓

NORFOLK SOUTHERN

69 kV TRANSMISSION LINE

230 kV TRANSMISSION LINE

115 kV TRANSMISSION LINE

LINE 170  
161 kV TRANSMISSION LINE

LINE 165  
161 kV TRANSMISSION LINE

115 kV TRANSMISSION LINE

161 kV TRANSMISSION LINE