

# Stennis International Airport

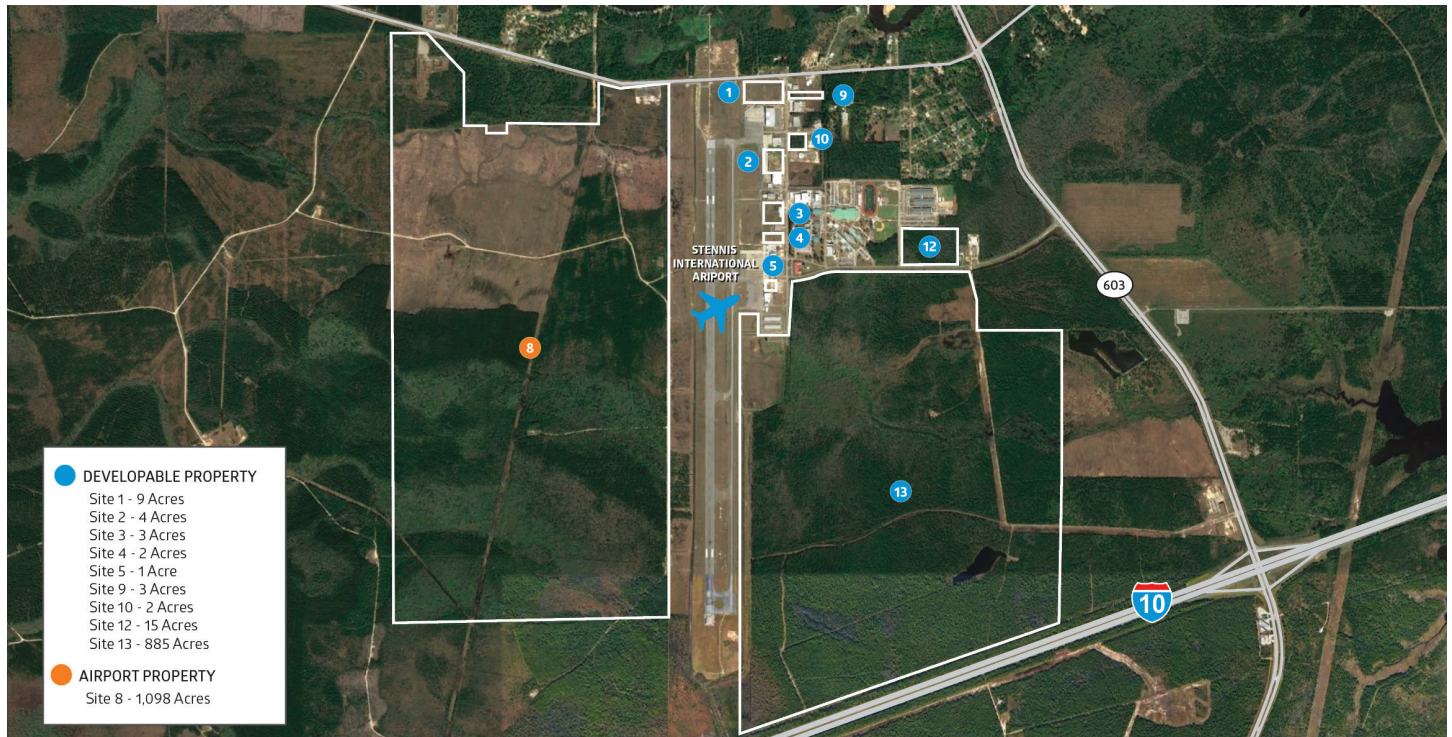


ECONOMIC  
DEVELOPMENT

7250 Stennis Airport Road, Bay St. Louis, Mississippi 39556  
30.373521, -89.451026

## PROPERTY OVERVIEW

Spreading out over 3,060 contiguous acres, the Airpark offers ample room for expansion, even as a location adjacent to the Stennis International Airport assures an abundance of 24/7 convenience in air travel. The Airport's lighted and grooved 8,500-ft. runway is equipped to handle the world's largest aircraft. Stennis International Airpark is home to 30 manufacturers and service companies employing 272 people. Parcels available for development range from 9 to 1,000 acres.



### Acreeage

3,060 Total Acres



### Property Type

Mixed Light & Heavy  
Industrial



### Ownership

Publicly Owned

## Site Information

- **Total Acres:** 3,060 ( sites from 9 - 1,000 acres available)
- **Ownership:** Publicly owned
- **Zoning:** Some parcels are light industrial, others are heavy industrial
- **Topography:** Flat
- **Flood Plain:** Yes; however, not all parcels
- **Reports & Surveys Available:** Phase 1 Environmental, Wetlands Delineation
- **Property Advantages:** Runway access and available hangar space; Access to the east/west Interstate 10 corridor

## Transportation

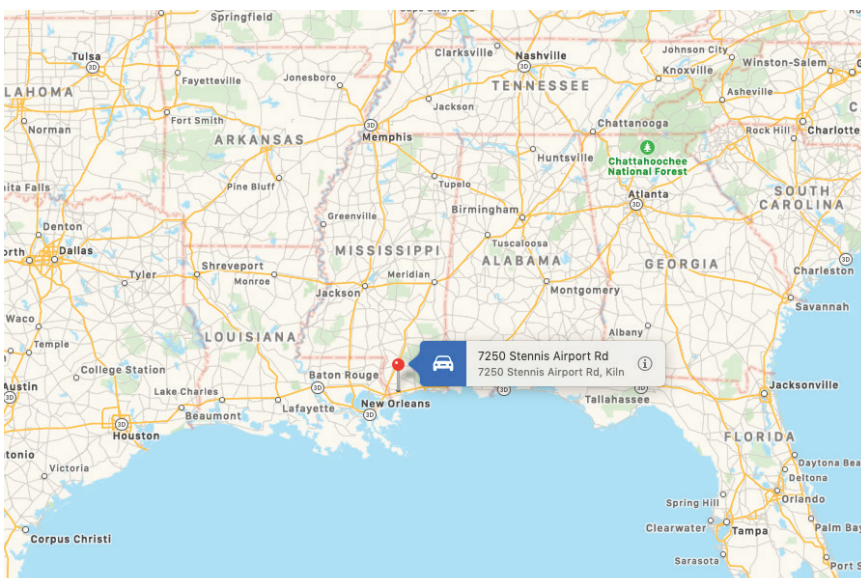
- **Interstate Name:** I-10 (1 mile); I-59 (15 miles); I-12 (20 miles)
- **Highway Name:** U.S. Highway 603 (1 mile); U.S. Highway 90 (8 miles)
- **Airports:** Stennis International Airport ((KHSA) Adjacent); Gulfport-Biloxi International Airport ((GPT) 26 miles); New Orleans International Airport ((MSY) 66 miles)
- **Port:** Port Bienville Industrial Park (20 miles); Port of Gulfport, Mississippi (25 miles); Port of New Orleans, Louisiana (57 miles)

## Utilities

- **Electric Provider:** Cooperative Energy/Coast Electric
- **Transmission Voltage:** 115kV
- **Distance to Nearest Substation:** <1 mile
- **Natural Gas Provider:** CenterPoint Energy
- **Water Provider:** Kiln Utility and Fire District of Hancock County
- **Water Main Size:** Multiple lines either 6", 10", or 16"
- **Sewer Provider:** Hancock County Utility Authority
- **Sewer Main Size:** Multiple lines either 8", 10", or 12"
- **Telecommunications Provider:** AT&T & CSpire

## Documents

- **[Economic Overview:](#)** Stennis International Airport 45 minute drive-time
- **[Site Map](#)**
- **[Electrical Infrastructure Map](#)**
- **[Utilities Map](#)**



## Contact

### Blaine LaFontaine

Hancock County Port and Harbor  
Commission  
228.467.9231 ext. 20  
BLaFontaine@hcphc.ms

### Mitch Stringer

Cooperative Energy  
601.705.13491  
mstringer@cooperativeenergy.com