

Small Equipment Manufacturing

Electrical | Appliances | Tools | Lighting

Why Mississippi?

From medical devices and power tools to electric transformers and generators, the breadth of experience in small equipment manufacturing in Mississippi is anything but “small”. More than 6,000 Mississippians are employed by electrical equipment, appliance, and component establishments, and the industry contributes \$700 million annually to the state’s gross domestic product. Small equipment manufacturers benefit from Mississippi’s business-friendly environment and geographic location. After all, Mississippi is bisected by six interstate highways, providing access to 32% of U.S. businesses and major population centers within one day’s drive.



Mississippi’s **4th** largest export is **Instruments and Appliances for Medical Sciences**

MISSISSIPPI IS A
**RIGHT-TO-
WORK**
STATE

High Demand Small Equipment Manufacturing Occupations			
	Mississippi		
Occupation	Employment	Average Wage	National Average Wage
Electrical, Electronic, and Electromechanical Assemblers, Except Coil Winders, Tapers, and Finishers	2,150	\$35,100	\$38,800
Team Assemblers	12,799	\$31,800	\$36,000
First-Line Supervisors of Production and Operating Workers	6,712	\$61,600	\$66,800
Inspectors, Testers, Sorters, Samplers, and Weighers	5,149	\$39,100	\$44,600
Electrical Engineers	1,276	\$98,100	\$106,000
Laborers and Freight, Stock, and Material Movers, Hand	29,561	\$29,000	\$33,700
Machinists	2,945	\$43,100	\$47,800
Industrial Engineers	2,071	\$83,100	\$93,600
Mechanical Engineers	1,868	\$84,500	\$95,600
Sales Representatives, Wholesale and Manufacturing, Except Technical and Scientific Products	7,939	\$59,200	\$73,500

Source: JobsEQ, Data as of 2021Q1.



Incentives

New or expansion projects investing more than \$60 million may qualify for a **fee-in-lieu of property taxes**. The negotiated fee may be awarded for up to 10 years but cannot be less than one-third of the property tax levy. For projects with new investment less than \$60 million, a **standard property tax exemption** may be available. The exemption may be awarded for up to 10 years, and reduces a portion of taxes, excluding school taxes.

The **Advantage Jobs Program** provides a cash rebate of a percentage of Mississippi payroll to qualified manufacturers for a period of up to 10 years. Companies are deemed eligible based on the average wage paid to employees.

The **Research and Development Skills Tax Credits** are equal to \$1,000 per employee per year for a five-year period that can be used to reduce an eligible entity's income tax liability. These credits are available for any position requiring research or development skills.

Raw materials and electricity used in the manufacturing process are **exempt** from **state sales tax**.

Four foreign trade zones throughout the state offer **duty and excise tax benefits**

Research and Development Partners



Mississippi State University

The **Center for Advanced Vehicular Systems (CAVS)** is one of the premier vehicular research institutions. Current research focuses on autonomous vehicles, steel, additive manufacturing, computational fluid dynamics, virtual reality and augmented reality, and athlete engineering. In addition, CAVS partners with businesses across the state on industry specific research needs.



The University of Mississippi

The **Haley Barbour Center for Manufacturing Excellence (CME)** develops the next generation of leaders in modern manufacturing. The CME combines accountancy, business, and engineering curriculum with experiential learning opportunities, many of which are in the state's small equipment manufacturing plants.



The University of Southern Mississippi

The **Mississippi Polymer Institute (MPI)** offers full-service technical and scientific resources for polymer-based materials industries. MPI was established in 1993 with a goal of growing high-tech polymer and polymer-related industries in the state. MPI provided all training for GE Aviation, Ellisville composites, and most recently PG Technologies.



For more information on the small equipment manufacturing industry, contact a Cooperative Energy Economic Development team member or visit www.CooperativeEnergy.com



ECONOMIC
DEVELOPMENT

Small Equipment Manufacturing Property Spotlight

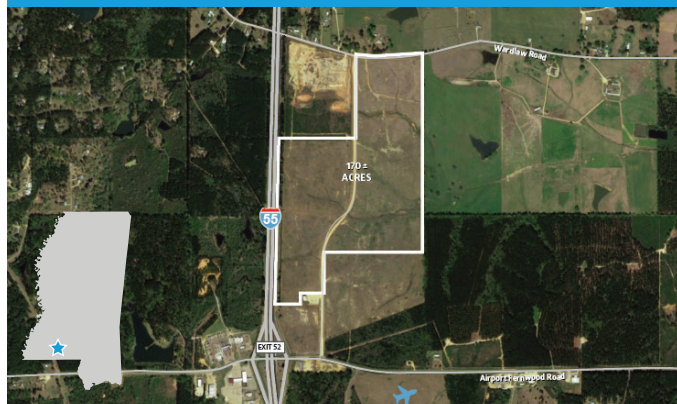
LINBROOK INDUSTRIAL PARK



Located midway between New Orleans, Louisiana, and Jackson, Mississippi, the Linbrook Business Park is in Brookhaven, Mississippi. The 400-acre industrial park has large greenfield parcels available for development as well as two state of the art industrial buildings. A carbon dioxide line is located within the industrial park.

- New Market Tax Credit and Opportunity Zone eligible
- Available buildings:
 - » Brookhaven Spec Building #2:
 - 50,000 SF expandable to 150,000 SF
 - Year built: 2021
 - Column Spacing: 50' x 125'
 - » Keystone Building:
 - 54,000 SF expandable to 200,000 SF
 - Year built: 2017
 - Full HVAC, built out office space and restrooms
 - 6" reinforced floor

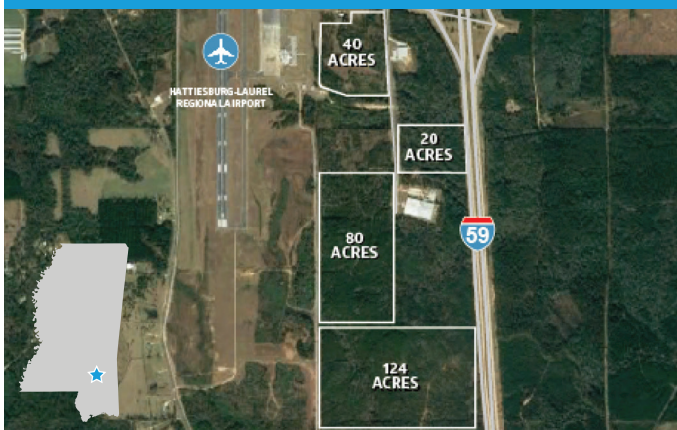
GATEWAY INDUSTRIAL PARK



The Gateway Industrial Park is a 170 ± acre site located in Pike County, Mississippi, approximately three miles south of the city of McComb. This publicly owned site has Interstate 55 frontage and is New Markets Tax Credit and Opportunity Zone eligible.

- All 170 acres cleared
- All environmental due diligence complete
- Approximately 90 miles from four metropolitan areas: Baton Rouge, La., New Orleans, La., Jackson, Miss., and Hattiesburg, Miss.

I-59 SUPPLY CHAIN PARK



Located adjacent to Interstate 59 between Laurel and Hattiesburg, Mississippi, the I-59 Supply Chain Park offers a light industrial setting with interstate frontage. It is publicly owned, and all utilities are located within the park.

- Parcels: 20 – 124 developable acres
- All environmental due diligence complete
- Current tenants – Flowers Foods, Ashley Furniture, Notrax
- 124 acre site is cleared
- Located in one of the fastest growing metro areas in the region