

Aerospace

Global aerospace and defense leaders are calling Mississippi home in growing numbers. Compelling business advantages, like the state's low operating costs, minimal tax burden, easy access to U.S. and international markets, and proximity to important military installations, have attracted numerous aerospace companies to the state. These enterprises are thriving as a result of Mississippi's productive, well-trained workforce.

Why Mississippi for Aerospace?



Accessibility to customers – Mississippi is in the heart of the Gulf Coast Aerospace Corridor. The state's Tier I, II, and III suppliers are within driving distance of aircraft and engine OEMs as well as commercial space test, production, and launch sites throughout the southeast U.S.



Streamlined decisions – With a population of approximately three million, Mississippi has the luxury of accessible political leadership. A result of prominent federal representation, the aerospace and defense industry in Mississippi experiences steady growth.



Workforce – More than 170,000 Mississippians are employed in occupations relevant to aerospace manufacturing. These individuals, combined with more than 11,000 active military personnel at the state's five military installations, create a workforce ready to help your business soar.

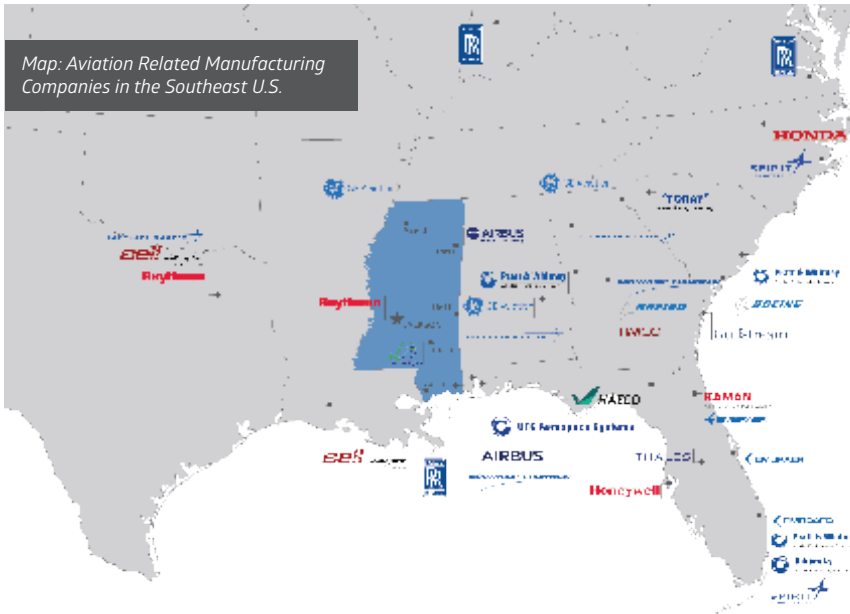


High Demand Aerospace Manufacturing Occupations

Occupation	Mississippi		National Average Wage
	Employment	Average Annual Wage	
All Production Occupations	106,480	\$35,100	\$39,200
Aircraft Structure, Surfaces, Rigging, and Systems Assemblers	131	\$61,400	\$55,500
Aerospace Engineers	117	\$97,900	\$121,100
Industrial Engineers	2,017	\$83,100	\$93,600
Inspectors, Testers, Sorters, Samplers, and Weighers	5,149	\$39,100	\$44,600
Aircraft Mechanics and Service Technicians	993	\$66,900	\$69,000
Machinists	2,945	\$43,100	\$47,800
Software Developers, Systems Software	2,755	\$88,000	\$114,300
Mechanical Engineers	1,868	\$84,500	\$95,600
Purchasing Agents, Except Wholesale, Retail, and Farm Products	2,333	\$62,600	\$72,400
Computer Numerically Controlled Tool Operators	1,006	\$35,900	\$44,300

Source: JobsEQ, Data as of 2021Q1

Map: Aviation Related Manufacturing Companies in the Southeast U.S.



EVERY
COMMERCIAL
AIRPLANE ✈️
IN THE WORLD
HAS AT LEAST ONE
COMPONENT MADE IN
MISSISSIPPI



John C. Stennis
NASA Space Center
in Hancock County,
Mississippi, is the
nation's **LARGEST**
rocket engine
testing complex.

Incentives

The **Mississippi Aerospace Initiative Incentives Program** provides unique tax incentives to companies that manufacture or assemble components for the aerospace industry or provide research, development or training services for the sector. Potential incentives for this program include:

- » 10-year state income tax exemption
- » 10-year state franchise tax exemption
- » Full sales and use tax exemption for the start-up of a facility or expansion

"Airbus Bill": As of 2018, gross proceeds from the sale of rotary-wing aircraft to out of state customers (exported within 48 hours and registered out of state) are EXEMPT from Mississippi state sales tax.

Research and Development Partners



Mississippi State University
Raspert Flight Research Laboratory
Incubated Honda Business Jet and Aurora Flight Sciences; Currently working with Boeing

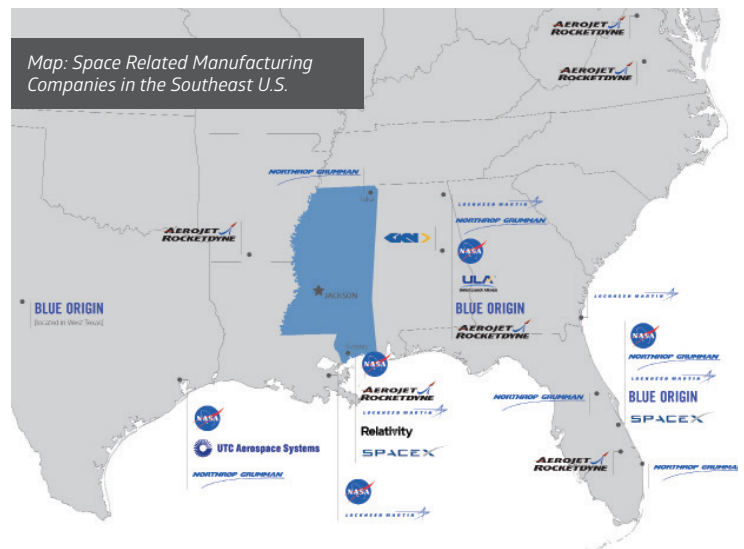


The University of Southern Mississippi
Mississippi Polymer Institute
Initial training for all GE Aviation, Ellisville composites training and most recently PG Technologies



The University of Mississippi
National Center for Physical Acoustics
Research programs in areas of physical acoustics

Map: Space Related Manufacturing Companies in the Southeast U.S.



"The [Mississippi] facility and local employment base will enable us to advance our high-performance rocket fuel and grow our company for many years to come."

– Chris Stoker, Adranos CEO

2020 Location & Expansion | 45 Jobs

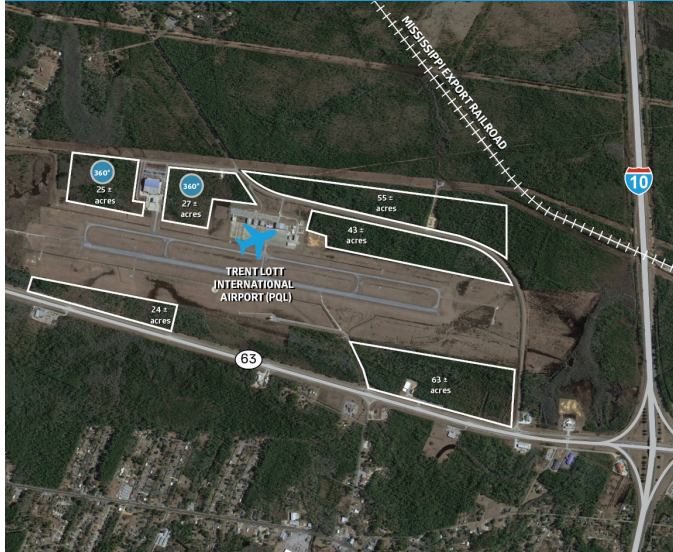
For more information on the aerospace industry, contact a Cooperative Energy Economic Development team member or visit www.CooperativeEnergy.com



ECONOMIC
DEVELOPMENT

Aerospace Property Spotlight

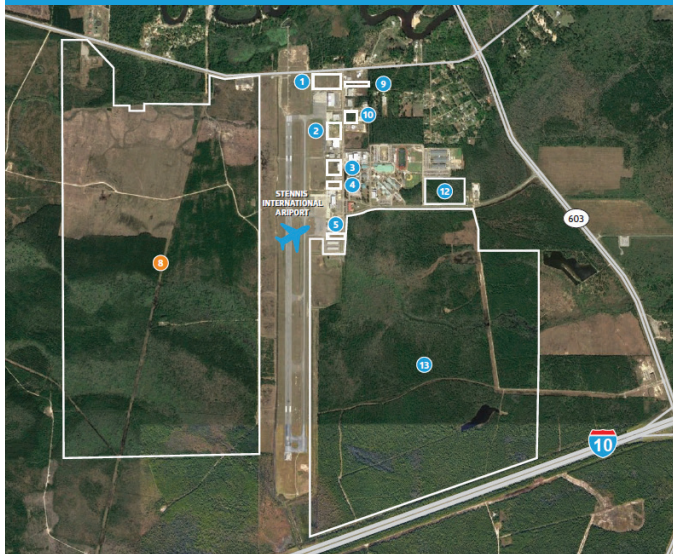
JACKSON COUNTY AVIATION TECHNOLOGY PARK



Located in the heart of the Gulf Coast Aerospace Corridor, this 230-acre aviation technology park is home to Northrop Grumman Autonomous Systems, whose 105,000 square foot Unmanned Systems Center facility has been operational since January 2006. The Park is less than one mile from four-lane Mississippi Highway 63 and one mile from Interstate 10. With permitted sites, exclusive ramp space, and the ability to taxi aircraft from runway to facility, in addition to the capacity to provide engine run up and test flights, the Park is quickly emerging as one of the region's premier facilities for aviation-related businesses.

- Parcel size: 10-72 acres
- Direct access to 6,500' x 100' runway
- Airport: Trent Lott International (KPQL)
- Foreign Trade Zone #92
- Opportunity Zone and New Markets Tax Credit eligible
- Existing tenants: Northrop Grumman Autonomous Systems Center

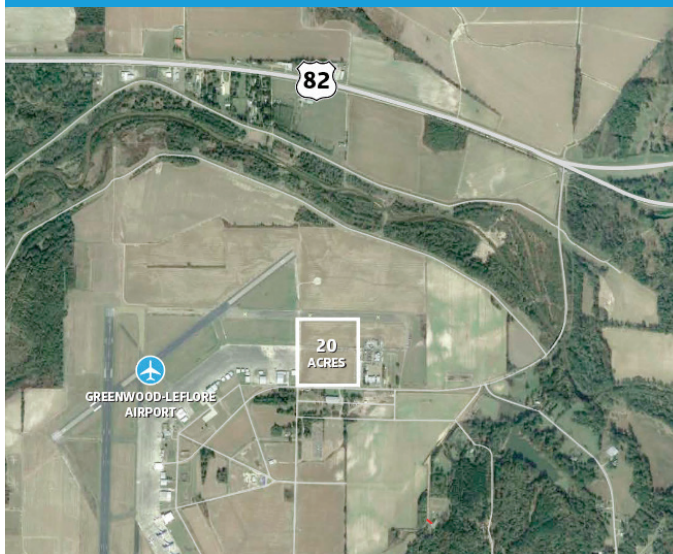
STENNIS INTERNATIONAL AIRPARK



Owned and operated by the Hancock County Port and Harbor Commission, the Stennis Airpark offers multiple site opportunities for domestic and/or foreign direct investment. Spreading out over 3,000 contiguous acres, the Airpark offers ample room for expansion, even as a location adjacent to the Stennis International Airport assures an abundance of 24/7 convenience in air travel. The Airport's lighted and grooved 8,500-ft. runway is equipped to handle the world's largest aircraft. Stennis International Airpark is home to 30 manufacturers and service companies employing 272 people.

- Parcel size: 4-1,100 acres
- Hangars available for lease (7,000 SF to 13,125 SF)
- Airport: Stennis International (KHSA)
- Foreign Trade Zone #92
- Existing tenants: Tyonek, Optech, JALBTCX, NOAA, US Navy, Million Air

GREENWOOD-LEFLORE AIRPORT SITE



The Greenwood-Leflore Airport Site is located almost equidistant between Memphis, Tennessee, and Jackson, Mississippi. The airspace is not congested, and the airport's operations level is low. The airport is located on four-lane U.S. Highway 82 just 17 miles west of Interstate 55. The airport sits on a 1,000-acre site, with several hundred acres suitable for immediate development. Greenwood-Leflore's infrastructure includes a 60-acre concrete ramp, three active runways, a new eight-story control tower, a fire-crash station, and a broad range of instrument approaches including a High TACAN, High VOR and ILS. The principal runway, 18-36, is designed to support aircraft weighing up to 560,000 lbs. and measuring 6,503' x 150'. Supporting taxiways measures 75' wide. The airport master plan calls for this runway to be extended to 8,000' and the land is already under airport control.

- Parcel size: 20 acres
- Airport: Greenwood-Leflore Airport (KGWO)
- Existing tenants: GE Capital Aviation Services