



## Economic Overview

---

# Gateway Industrial Site 45 minute drive-time (county level)

---



Demographic Profile..... 3

Employment Trends ..... 5

Unemployment Rate ..... 5

Wage Trends ..... 6

Cost of Living Index ..... 7

Industry Snapshot ..... 8

Occupation Snapshot ..... 10

Industry Clusters ..... 12

Education Levels..... 13

Gross Domestic Product..... 14

Gateway Industrial Site 45 minute drive-time (county level) Regional Map..... 15

Region Definition..... 16

FAQ..... 17

# Demographic Profile

The population in the Gateway Industrial Site 45 minute drive-time (county level) was 530,561 per American Community Survey data for 2015-2019.

The region has a civilian labor force of 230,109 with a participation rate of 55.3%. Of individuals 25 to 64 in the Gateway Industrial Site 45 minute drive-time (county level), 17.6% have a bachelor's degree or higher which compares with 33.5% in the nation.

The median household income in the Gateway Industrial Site 45 minute drive-time (county level) is \$46,800 and the median house value is \$131,255.

## Summary<sup>1</sup>

| Demographics  | Percent   |             |       | Value   |             |             |
|---|---|-------------|-------|---|-------------|-------------|
|   | Gateway Industrial Site 45 minute drive-time (county level) | Mississippi | USA   | Gateway Industrial Site 45 minute drive-time (county level) | Mississippi | USA         |
| Population (ACS)  | —   | —           | —     | 530,561   | 2,984,418   | 324,697,795 |
| Male  | 48.9%   | 48.5%       | 49.2% | 259,533   | 1,447,873   | 159,886,919 |
| Female  | 51.1%   | 51.5%       | 50.8% | 271,028   | 1,536,545   | 164,810,876 |
| Median Age <sup>2</sup>   | —   | —           | —     | 37.8  | 37.5        | 38.1        |
| Under 18 Years  | 24.3%   | 23.9%       | 22.6% | 129,016   | 713,493     | 73,429,392  |
| 18 to 24 Years  | 8.9%  | 9.9%        | 9.4%  | 47,254  | 295,255     | 30,646,327  |
| 25 to 34 Years  | 13.2%   | 13.0%       | 13.9% | 69,823  | 387,644     | 45,030,415  |
| 35 to 44 Years  | 12.8%   | 12.4%       | 12.6% | 67,692  | 371,300     | 40,978,831  |
| 45 to 54 Years  | 12.3%   | 12.5%       | 13.0% | 65,332  | 372,814     | 42,072,620  |
| 55 to 64 Years  | 13.1%   | 12.8%       | 12.9% | 69,241  | 382,890     | 41,756,414  |
| 65 to 74 Years  | 9.5%  | 9.2%        | 9.1%  | 50,231  | 273,673     | 29,542,266  |
| 75 Years, and Over  | 6.0%  | 6.3%        | 6.5%  | 31,972  | 187,349     | 21,241,530  |
| Race: White   | 67.9%   | 58.4%       | 72.5% | 360,496   | 1,743,217   | 235,377,662 |
| Race: Black or African American   | 29.3%   | 37.7%       | 12.7% | 155,454   | 1,125,623   | 41,234,642  |
| Race: American Indian and Alaska Native   | 0.3%  | 0.5%        | 0.8%  | 1,454   | 14,269      | 2,750,143   |
| Race: Asian   | 0.5%  | 1.0%        | 5.5%  | 2,609   | 29,605      | 17,924,209  |
| Race: Native Hawaiian and Other Pacific Islander                                | 0.0%  | 0.0%        | 0.2%  | 40  | 680         | 599,868     |
| Race: Some Other Race   | 0.6%  | 1.0%        | 4.9%  | 3,151   | 30,728      | 16,047,369  |
| Race: Two or More Races   | 1.4%  | 1.4%        | 3.3%  | 7,357   | 40,296      | 10,763,902  |
| Hispanic or Latino (of any race)  | 2.8%  | 3.1%        | 18.0% | 14,761  | 91,202      | 58,479,370  |
| <b>Population Growth</b>  |   |             |       |   |             |             |
| Population (Pop Estimates) <sup>4</sup>   | —   | —           | —     | 535,532   | 2,966,786   | 329,484,123 |
| Population Annual Average Growth <sup>4</sup>                                   | 0.3%  | 0.0%        | 0.6%  | 1,609   | -383        | 2,015,698   |
| People per Square Mile  | —   | —           | —     | 65.8  | 63.4        | 92.9        |
| <b>Economic</b>   |   |             |       |   |             |             |
| Labor Force Participation Rate and Size (civilian population 16 years and over) | 55.3%   | 57.0%       | 63.2% | 230,109   | 1,334,957   | 163,555,585 |
| Prime-Age Labor Force Participation Rate and Size (civilian population 25-54)   | 73.7%   | 76.7%       | 82.1% | 149,266   | 863,172     | 104,634,905 |
| Armed Forces Labor Force  | 0.1%  | 0.5%        | 0.4%  | 398   | 11,721      | 1,073,907   |
| Veterans, Age 18-64   | 4.2%  | 5.0%        | 4.6%  | 13,372  | 89,822      | 9,143,042   |
| Veterans Labor Force Participation Rate and Size, Age 18-64                     | 73.6%   | 72.4%       | 76.6% | 9,840   | 65,012      | 7,003,778   |
| Median Household Income <sup>2</sup>  | —   | —           | —     | \$46,800  | \$45,081    | \$62,843    |
| Per Capita Income   | —   | —           | —     | \$24,109  | \$24,369    | \$34,103    |
| Mean Commute Time (minutes)   | —   | —           | —     | 32.3  | 24.8        | 26.9        |

## Summary<sup>1</sup>

|  | Percent  |             |       | Value  |             |             |
|--|--|-------------|-------|--|-------------|-------------|
|  | Gateway Industrial Site<br>45 minute drive-time (county level) | Mississippi |       | Gateway Industrial Site<br>45 minute drive-time (county level) | USA         |             |
|  |  | Mississippi | USA   |  | Mississippi | USA         |
| Commute via Public Transportation                                      | 0.3%   | 0.3%        | 5.0%  | 668  | 3,578       | 7,641,160   |
| <b>Educational Attainment, Age 25-64</b>                               |  |             |       |  |             |             |
| No High School Diploma   | 15.7%  | 13.6%       | 10.9% | 42,802   | 205,933     | 18,550,150  |
| High School Graduate   | 37.8%  | 29.8%       | 25.7% | 102,835  | 451,945     | 43,627,868  |
| Some College, No Degree  | 20.3%  | 23.0%       | 20.7% | 55,264   | 348,586     | 35,174,790  |
| Associate's Degree   | 8.6%   | 11.0%       | 9.1%  | 23,359   | 166,997     | 15,526,064  |
| Bachelor's Degree  | 12.4%  | 14.3%       | 21.2% | 33,770   | 217,198     | 35,997,848  |
| Postgraduate Degree  | 5.2%   | 8.2%        | 12.3% | 14,058   | 123,989     | 20,961,560  |
| <b>Housing</b>   |  |             |       |  |             |             |
| Total Housing Units  | —  | —           | —     | 235,852  | 1,322,808   | 137,428,986 |
| Median House Value (of owner-occupied units) <sup>2</sup>              | —  | —           | —     | \$131,255  | \$119,000   | \$217,500   |
| Homeowner Vacancy  | 1.5%   | 2.1%        | 1.6%  | 2,228  | 16,416      | 1,257,737   |
| Rental Vacancy   | 8.8%   | 9.8%        | 6.0%  | 4,533  | 38,817      | 2,793,023   |
| Renter-Occupied Housing Units (% of Occupied Units)                    | 24.4%  | 31.8%       | 36.0% | 46,856   | 351,553     | 43,481,667  |
| Occupied Housing Units with No Vehicle Available (% of Occupied Units) | 6.2%   | 6.5%        | 8.6%  | 11,915   | 71,303      | 10,395,713  |
| <b>Social</b>  |  |             |       |  |             |             |
| Poverty Level (of all people)  | 20.5%  | 20.3%       | 13.4% | 105,515  | 585,786     | 42,510,843  |
| Households Receiving Food Stamps/SNAP                                  | 17.4%  | 15.4%       | 11.7% | 33,470   | 170,529     | 14,171,567  |
| Enrolled in Grade 12 (% of total population)                           | 1.3%   | 1.3%        | 1.4%  | 6,668  | 39,164      | 4,422,344   |
| Disconnected Youth <sup>3</sup>  | 4.3%   | 4.0%        | 2.5%  | 1,260  | 6,745       | 423,273     |
| Children in Single Parent Families (% of all children)                 | 42.5%  | 45.6%       | 34.1% | 50,588   | 301,578     | 23,790,005  |
| Uninsured  | 11.0%  | 12.3%       | 8.8%  | 57,206   | 358,580     | 28,248,613  |
| With a Disability, Age 18-64   | 15.8%  | 14.7%       | 10.3% | 49,022   | 258,316     | 20,187,604  |
| With a Disability, Age 18-64, Labor Force Participation Rate and Size  | 34.7%  | 33.9%       | 42.2% | 16,994   | 87,571      | 8,509,463   |
| Foreign Born   | 1.5%   | 2.4%        | 13.6% | 8,055  | 70,469      | 44,011,870  |
| Speak English Less Than Very Well (population 5 yrs and over)          | 1.5%   | 1.6%        | 8.4%  | 7,236  | 45,142      | 25,615,365  |

Source: [JobsEQ®](#)

1. American Community Survey 2015-2019, unless noted otherwise

2. Median values for certain aggregate regions (such as MSAs) may be estimated as the weighted averages of the median values from the composing counties.

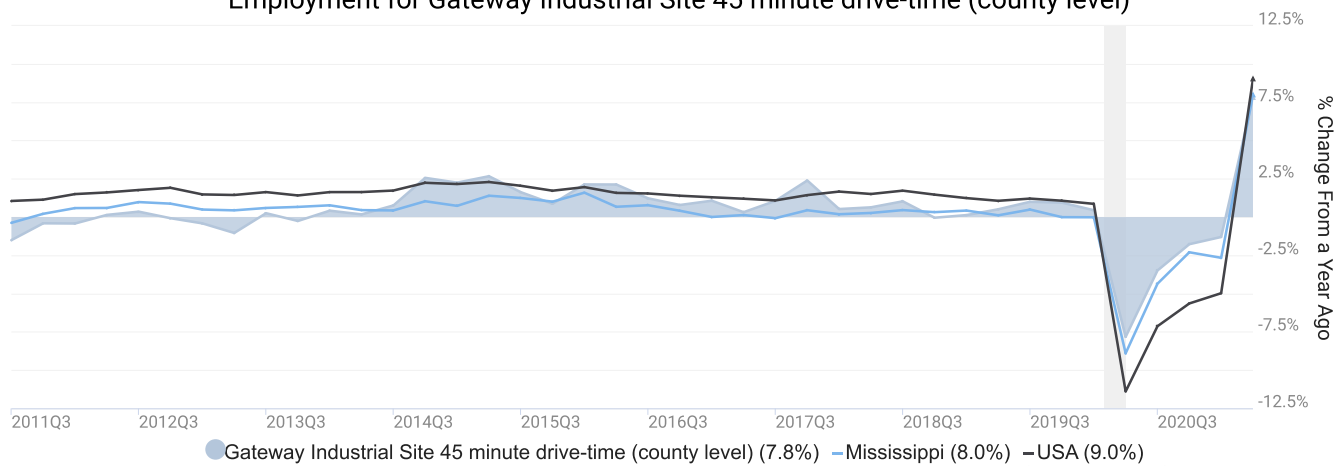
3. Disconnected Youth are 16-19 year olds who are (1) not in school, (2) not high school graduates, and (3) either unemployed or not in the labor force.

4. Census 2020, annual average growth rate since 2010

# Employment Trends

As of 2021Q2, total employment for the Gateway Industrial Site 45 minute drive-time (county level) was 158,684 (based on a four-quarter moving average). Over the year ending 2021Q2, employment increased 7.8% in the region.

Employment for Gateway Industrial Site 45 minute drive-time (county level)

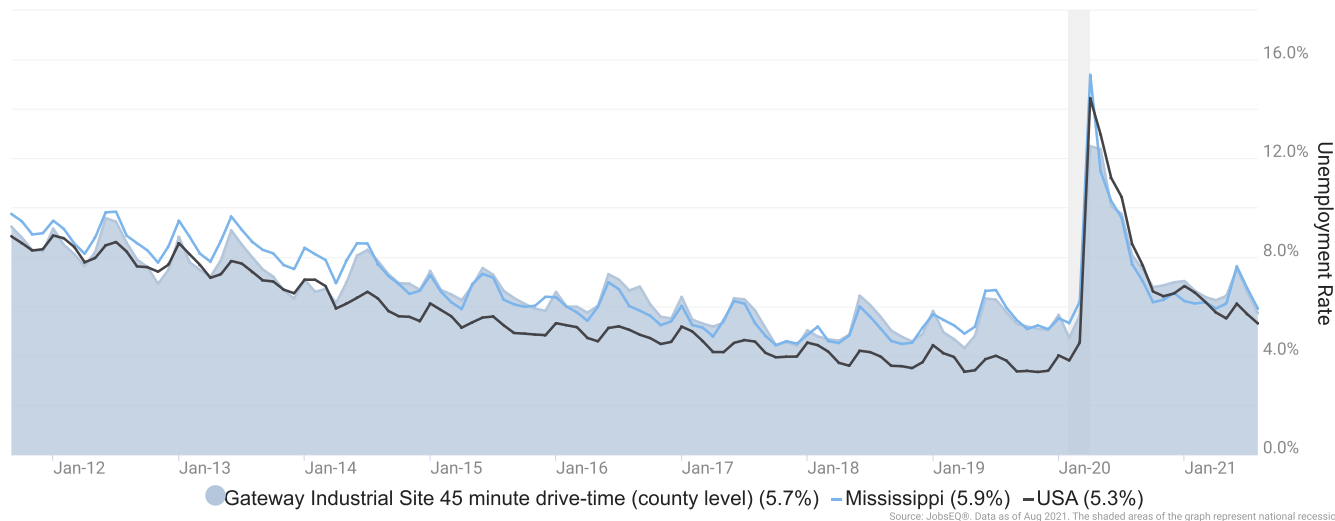


Employment data are derived from the Quarterly Census of Employment and Wages, provided by the Bureau of Labor Statistics and imputed where necessary. Data are updated through 2021Q1 with preliminary estimates updated to 2021Q2.

# Unemployment Rate

The unemployment rate for the Gateway Industrial Site 45 minute drive-time (county level) was 5.7% as of August 2021. The regional unemployment rate was higher than the national rate of 5.3%. One year earlier, in August 2020, the unemployment rate in the Gateway Industrial Site 45 minute drive-time (county level) was 8.1%.

Unemployment Rate for Gateway Industrial Site 45 minute drive-time (county level)

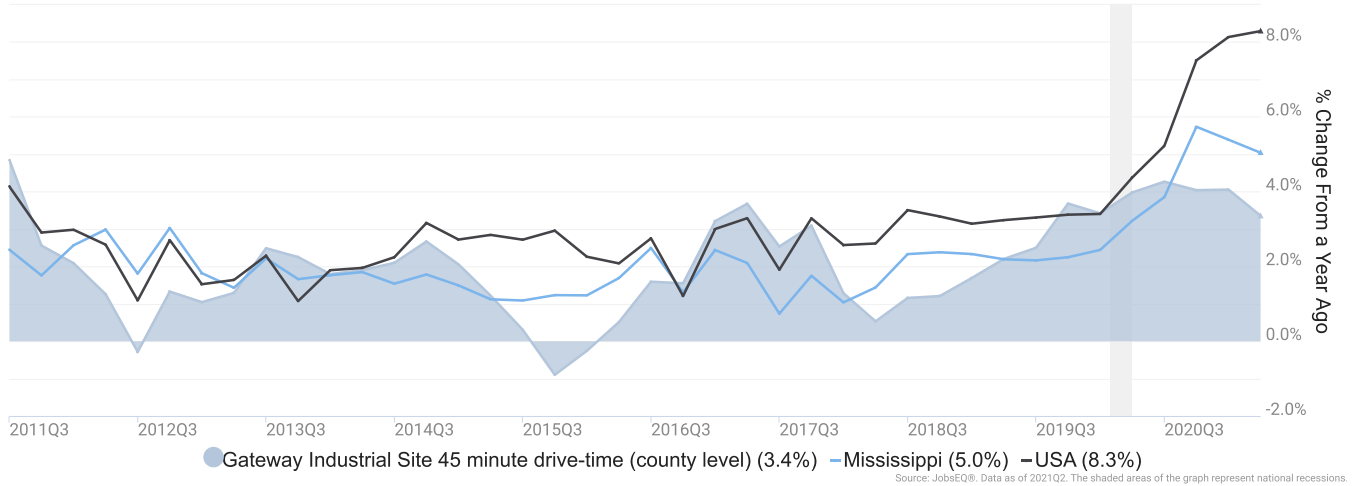


Unemployment rate data are from the Local Area Unemployment Statistics, provided by the Bureau of Labor Statistics and updated through August 2021.

# Wage Trends

The average worker in the Gateway Industrial Site 45 minute drive-time (county level) earned annual wages of \$38,131 as of 2021Q2. Average annual wages per worker increased 3.4% in the region over the preceding four quarters. For comparison purposes, annual average wages were \$64,141 in the nation as of 2021Q2.

Average Annual Wages for Gateway Industrial Site 45 minute drive-time (county level)



Annual average wages per worker data are derived from the Quarterly Census of Employment and Wages, provided by the Bureau of Labor Statistics and imputed where necessary. Data are updated through 2021Q1 with preliminary estimates updated to 2021Q2.

# Cost of Living Index

The Cost of Living Index estimates the relative price levels for consumer goods and services. When applied to wages and salaries, the result is a measure of relative purchasing power. The cost of living is 12.9% lower in Gateway Industrial Site 45 minute drive-time (county level) than the U.S. average.

## Cost of Living Information

|   | Annual Average Salary | Cost of Living Index<br>(Base US) | US Purchasing Power |
|---|-----------------------|-----------------------------------|---------------------|
| Gateway Industrial Site 45 minute drive-time (county level) | \$38,131              | 87.1                              | \$43,797            |
| Mississippi   | \$42,555              | 84.8                              | \$50,186            |
| USA   | \$64,141              | 100.0                             | \$64,141            |

Source: [JobsEQ®](#)

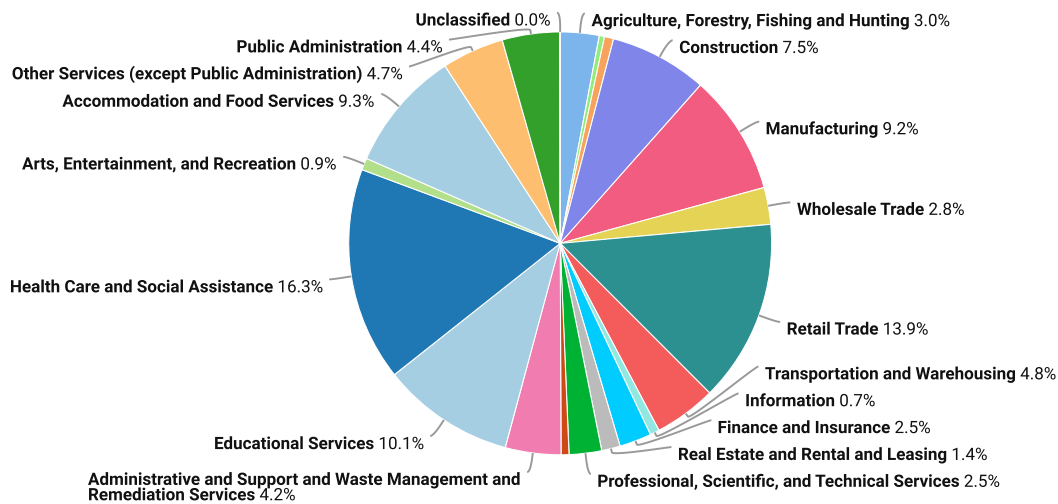
Data as of 2021Q2

Cost of Living per C2ER, data as of 2021Q1, imputed by Chmura where necessary.

# Industry Snapshot

The largest sector in the Gateway Industrial Site 45 minute drive-time (county level) is Health Care and Social Assistance, employing 25,915 workers. The next-largest sectors in the region are Retail Trade (22,123 workers) and Educational Services (16,103). High location quotients (LQs) indicate sectors in which a region has high concentrations of employment compared to the national average. The sectors with the largest LQs in the region are Agriculture, Forestry, Fishing and Hunting (LQ = 2.11), Retail Trade (1.33), and Utilities (1.31).

Total Workers for Gateway Industrial Site 45 minute drive-time (county level) by Industry



Source: JobsEQ® Data as of 2021Q2

Employment data are derived from the Quarterly Census of Employment and Wages, provided by the Bureau of Labor Statistics and imputed where necessary. Data are updated through 2021Q1 with preliminary estimates updated to 2021Q2.

Sectors in the Gateway Industrial Site 45 minute drive-time (county level) with the highest average wages per worker are Management of Companies and Enterprises (\$73,124), Mining, Quarrying, and Oil and Gas Extraction (\$65,593), and Utilities (\$64,278). Regional sectors with the best job growth (or most moderate job losses) over the last 5 years are Construction (+937 jobs), Health Care and Social Assistance (+901), and Accommodation and Food Services (+563).

Over the next 1 year, employment in the Gateway Industrial Site 45 minute drive-time (county level) is projected to expand by 154 jobs. The fastest growing sector in the region is expected to be Health Care and Social Assistance with a +1.0% year-over-year rate of growth. The strongest forecast by number of jobs over this period is expected for Health Care and Social Assistance (+256 jobs), Accommodation and Food Services (+94), and Administrative and Support and Waste Management and Remediation Services (+43).



| NAICS                         | Industry   | Empl           | Current         | 5-Year History |              |             | 1-Year Forecast |              |              |             |              |
|-------------------------------|--|----------------|-----------------|----------------|--------------|-------------|-----------------|--------------|--------------|-------------|--------------|
|                               |  |                | Avg Ann Wages   | LQ             | Empl Change  | Ann %       | Total Demand    | Exits        | Transfers    | Empl Growth | Ann % Growth |
| 62                            | Health Care and Social Assistance  | 25,915         | \$40,536        | 1.10           | 901          | 0.7%        | 2,703           | 1,203        | 1,244        | 256         | 1.0%         |
| 44                            | Retail Trade   | 22,123         | \$29,746        | 1.33           | -133         | -0.1%       | 2,844           | 1,303        | 1,645        | -104        | -0.5%        |
| 61                            | Educational Services   | 16,103         | \$36,863        | 1.26           | -1           | 0.0%        | 1,480           | 716          | 772          | -8          | -0.1%        |
| 72                            | Accommodation and Food Services  | 14,708         | \$14,961        | 1.22           | 563          | 0.8%        | 2,474           | 1,053        | 1,327        | 94          | 0.6%         |
| 31                            | Manufacturing  | 14,601         | \$47,573        | 1.12           | 234          | 0.3%        | 1,413           | 559          | 958          | -104        | -0.7%        |
| 23                            | Construction   | 11,871         | \$47,128        | 1.26           | 937          | 1.7%        | 1,180           | 418          | 746          | 16          | 0.1%         |
| 48                            | Transportation and Warehousing   | 7,550          | \$48,692        | 0.96           | 53           | 0.1%        | 802             | 341          | 462          | -1          | 0.0%         |
| 81                            | Other Services (except Public Administration)                            | 7,519          | \$23,951        | 1.09           | -626         | -1.6%       | 870             | 391          | 466          | 13          | 0.2%         |
| 92                            | Public Administration  | 7,010          | \$38,774        | 0.90           | -297         | -0.8%       | 638             | 272          | 370          | -4          | -0.1%        |
| 56                            | Administrative and Support and Waste Management and Remediation Services | 6,743          | \$29,161        | 0.67           | 478          | 1.5%        | 822             | 329          | 449          | 43          | 0.6%         |
| 11                            | Agriculture, Forestry, Fishing and Hunting                               | 4,713          | \$31,281        | 2.11           | -556         | -2.2%       | 442             | 216          | 291          | -65         | -1.4%        |
| 42                            | Wholesale Trade  | 4,465          | \$52,614        | 0.74           | 274          | 1.3%        | 449             | 176          | 292          | -19         | -0.4%        |
| 54                            | Professional, Scientific, and Technical Services                         | 3,954          | \$51,712        | 0.35           | 226          | 1.2%        | 346             | 126          | 212          | 8           | 0.2%         |
| 52                            | Finance and Insurance  | 3,888          | \$63,248        | 0.59           | 20           | 0.1%        | 362             | 138          | 225          | 0           | 0.0%         |
| 53                            | Real Estate and Rental and Leasing                                       | 2,248          | \$46,740        | 0.81           | 195          | 1.8%        | 225             | 103          | 124          | -2          | -0.1%        |
| 71                            | Arts, Entertainment, and Recreation                                      | 1,436          | \$18,258        | 0.57           | 33           | 0.5%        | 217             | 91           | 112          | 15          | 1.0%         |
| 51                            | Information  | 1,137          | \$45,673        | 0.36           | -359         | -5.3%       | 101             | 39           | 70           | -8          | -0.7%        |
| 22                            | Utilities  | 1,105          | \$64,278        | 1.31           | 106          | 2.0%        | 93              | 36           | 63           | -7          | -0.6%        |
| 55                            | Management of Companies and Enterprises                                  | 957            | \$73,124        | 0.40           | -15          | -0.3%       | 88              | 32           | 54           | 2           | 0.2%         |
| 21                            | Mining, Quarrying, and Oil and Gas Extraction                            | 637            | \$65,593        | 1.16           | -157         | -4.3%       | 69              | 21           | 44           | 4           | 0.6%         |
| 99                            | Unclassified   | 2              | \$31,051        | 0.01           | -19          | -35.9%      | 0               | 0            | 0            | 0           | 1.0%         |
| <b>Total - All Industries</b> |  | <b>158,684</b> | <b>\$38,131</b> | <b>1.00</b>    | <b>1,857</b> | <b>0.2%</b> | <b>17,439</b>   | <b>7,391</b> | <b>9,895</b> | <b>154</b>  | <b>0.1%</b>  |

Source: [JobsEQ®](http://www.chmuraecon.com/jobseq)

Employment data are derived from the Quarterly Census of Employment and Wages, provided by the Bureau of Labor Statistics and imputed where necessary. Data are updated through 2021Q1 with preliminary estimates updated to 2021Q2. Forecast employment growth uses national projections adapted for regional growth patterns.

# Occupation Snapshot

The largest major occupation group in the Gateway Industrial Site 45 minute drive-time (county level) is Sales and Related Occupations, employing 17,175 workers. The next-largest occupation groups in the region are Office and Administrative Support Occupations (16,773 workers) and Transportation and Material Moving Occupations (15,284). High location quotients (LQs) indicate occupation groups in which a region has high concentrations of employment compared to the national average. The major groups with the largest LQs in the region are Farming, Fishing, and Forestry Occupations (LQ = 1.43), Educational Instruction and Library Occupations (1.29), and Construction and Extraction Occupations (1.22).

Occupation groups in the Gateway Industrial Site 45 minute drive-time (county level) with the highest average wages per worker are Management Occupations (\$81,000), Architecture and Engineering Occupations (\$71,700), and Healthcare Practitioners and Technical Occupations (\$69,000). The unemployment rate in the region varied among the major groups from 1.8% among Legal Occupations to 13.5% among Food Preparation and Serving Related Occupations.

Over the next 1 year, the fastest growing occupation group in the Gateway Industrial Site 45 minute drive-time (county level) is expected to be Healthcare Support Occupations with a +1.8% year-over-year rate of growth. The strongest forecast by number of jobs over this period is expected for Healthcare Support Occupations (+143 jobs) and Food Preparation and Serving Related Occupations (+92). Over the same period, the highest separation demand (occupation demand due to retirements and workers moving from one occupation to another) is expected in Sales and Related Occupations (2,483 jobs) and Food Preparation and Serving Related Occupations (2,454).

**Gateway Industrial Site 45 minute drive-time (county level), 2021Q2<sup>1</sup>**

| SOC     | Occupation                                    | Empl   | Current                     |      |        |             | 5-Year History              |             |       | 1-Year Forecast |       |           |             |              |
|---------|---|--------|-----------------------------|------|--------|-------------|-----------------------------|-------------|-------|-----------------|-------|-----------|-------------|--------------|
|         |   |        | Mean Ann Wages <sup>2</sup> | LQ   | Unempl | Unempl Rate | Online Job Ads <sup>3</sup> | Empl Change | Ann % | Total Demand    | Exits | Transfers | Empl Growth | Ann % Growth |
| 41-0000 | Sales and Related                             | 17,175 | \$31,800                    | 1.13 | 1,934  | 8.3%        | 1,477                       | -143        | -0.2% | 2,400           | 1,018 | 1,465     | -83         | -0.5%        |
| 43-0000 | Office and Administrative Support             | 16,773 | \$33,900                    | 0.83 | 1,208  | 5.2%        | 620                         | -728        | -0.8% | 1,753           | 793   | 1,082     | -122        | -0.7%        |
| 53-0000 | Transportation and Material Moving            | 15,284 | \$33,000                    | 1.12 | 1,870  | 7.8%        | 1,200                       | 650         | 0.9%  | 1,918           | 688   | 1,232     | -2          | 0.0%         |
| 35-0000 | Food Preparation and Serving Related          | 14,174 | \$20,700                    | 1.19 | 3,105  | 13.5%       | 1,048                       | 530         | 0.8%  | 2,545           | 980   | 1,474     | 92          | 0.6%         |
| 25-0000 | Educational Instruction and Library           | 11,218 | \$40,300                    | 1.29 | 715    | 6.1%        | 78                          | -102        | -0.2% | 980             | 442   | 530       | 8           | 0.1%         |
| 11-0000 | Management                                    | 10,715 | \$81,000                    | 1.00 | 343    | 2.8%        | 343                         | 136         | 0.3%  | 882             | 339   | 566       | -23         | -0.2%        |
| 29-0000 | Healthcare Practitioners and Technical        | 10,283 | \$69,000                    | 1.09 | 313    | 2.6%        | 869                         | 459         | 0.9%  | 662             | 279   | 334       | 49          | 0.5%         |
| 51-0000 | Production                                    | 10,141 | \$37,800                    | 1.10 | 1,152  | 7.1%        | 258                         | -210        | -0.4% | 1,082           | 384   | 772       | -73         | -0.7%        |
| 47-0000 | Construction and Extraction                   | 9,050  | \$40,000                    | 1.22 | 1,336  | 8.0%        | 144                         | 381         | 0.9%  | 1,023           | 293   | 714       | 16          | 0.2%         |
| 31-0000 | Healthcare Support                            | 8,028  | \$23,600                    | 1.12 | 564    | 5.2%        | 364                         | 611         | 1.6%  | 1,194           | 509   | 543       | 143         | 1.8%         |
| 49-0000 | Installation, Maintenance, and Repair         | 7,012  | \$44,300                    | 1.15 | 621    | 5.5%        | 375                         | 249         | 0.7%  | 687             | 221   | 463       | 3           | 0.0%         |
| 37-0000 | Building and Grounds Cleaning and Maintenance | 5,377  | \$25,000                    | 1.04 | 742    | 8.3%        | 227                         | -44         | -0.2% | 750             | 296   | 418       | 35          | 0.7%         |
| 13-0000 | Business and Financial Operations             | 4,687  | \$60,900                    | 0.50 | 151    | 2.8%        | 248                         | 271         | 1.2%  | 453             | 130   | 315       | 8           | 0.2%         |
| 39-0000 | Personal Care and Service                     | 4,586  | \$25,100                    | 1.14 | 759    | 12.0%       | 99                          | -132        | -0.6% | 705             | 308   | 372       | 25          | 0.6%         |
| 33-0000 | Protective Service                            | 3,637  | \$32,500                    | 1.07 | 227    | 4.6%        | 83                          | -3          | 0.0%  | 365             | 149   | 214       | 2           | 0.1%         |
| 21-0000 | Community and Social Service                  | 3,171  | \$42,500                    | 1.12 | 76     | 2.6%        | 172                         | -27         | -0.2% | 385             | 120   | 233       | 33          | 1.0%         |

**Gateway Industrial Site 45 minute drive-time (county level), 2021Q2<sup>1</sup>**

| SOC                            | Occupation                                     | Empl           | Current                     |             |               |             | 5-Year History              |              |             | 1-Year Forecast |              |               |             |              |
|--------------------------------|--|----------------|-----------------------------|-------------|---------------|-------------|-----------------------------|--------------|-------------|-----------------|--------------|---------------|-------------|--------------|
|                                |  |                | Mean Ann Wages <sup>2</sup> | LQ          | Unempl        | Unempl Rate | Online Job Ads <sup>3</sup> | Empl Change  | Ann %       | Total Demand    | Exits        | Transfers     | Empl Growth | Ann % Growth |
| 27- 0000                       | Arts, Design, Entertainment, Sports, and Media | 1,710          | \$41,300                    | 0.61        | 153           | 10.2%       | 52                          | -12          | -0.1%       | 191             | 71           | 120           | 0           | 0.0%         |
| 45- 0000                       | Farming, Fishing, and Forestry                 | 1,534          | \$35,600                    | 1.43        | 180           | 9.2%        | 29                          | -82          | -1.0%       | 216             | 57           | 178           | -20         | -1.3%        |
| 17- 0000                       | Architecture and Engineering                   | 1,402          | \$71,700                    | 0.51        | 66            | 3.5%        | 62                          | 60           | 0.9%        | 111             | 34           | 78            | -2          | -0.1%        |
| 15- 0000                       | Computer and Mathematical                      | 1,161          | \$67,000                    | 0.23        | 30            | 2.7%        | 114                         | -78          | -1.3%       | 89              | 20           | 67            | 2           | 0.2%         |
| 23- 0000                       | Legal  | 794            | \$63,800                    | 0.58        | 18            | 1.8%        | 8                           | -11          | -0.3%       | 52              | 20           | 31            | 2           | 0.2%         |
| 19- 0000                       | Life, Physical, and Social Science             | 771            | \$65,600                    | 0.53        | 30            | 4.3%        | 44                          | 81           | 2.3%        | 71              | 16           | 55            | 0           | 0.0%         |
| <b>Total - All Occupations</b> |  | <b>158,684</b> | <b>\$40,200</b>             | <b>1.00</b> | <b>15,593</b> | <b>7.0%</b> | <b>7,916</b>                | <b>1,857</b> | <b>0.2%</b> | <b>18,544</b>   | <b>7,165</b> | <b>11,255</b> | <b>124</b>  | <b>0.1%</b>  |

Source: [JobsEQ®](https://www.jobseq.com)

Data as of 2021Q2 unless noted otherwise

Note: Figures may not sum due to rounding.

1. Data based on a four-quarter moving average unless noted otherwise.

2. Wage data are as of 2020 and represent the average for all Covered Employment

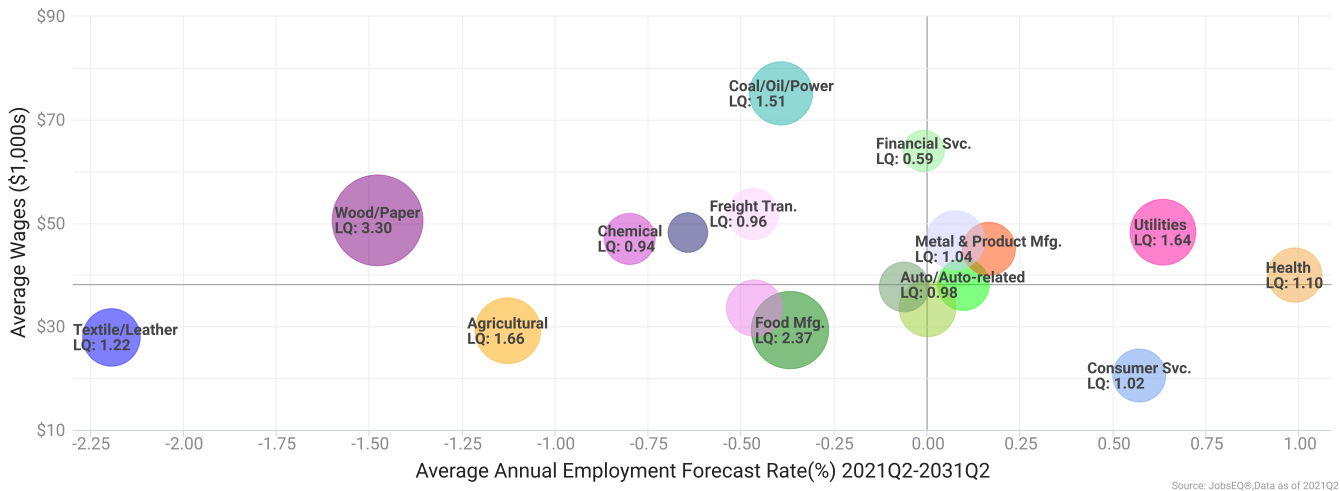
3. Data represent found online ads active within the last thirty days in the selected region; data represents a sampling rather than the complete universe of postings. Ads lacking zip code information but designating a place (city, town, etc.) may be assigned to the zip code with greatest employment in that place for queries in this analytic. Due to alternative county-assignment algorithms, ad counts in this analytic may not match that shown in RTI (nor in the popup window ad list).

Occupation employment data are estimated via industry employment data and the estimated industry/occupation mix. Industry employment data are derived from the Quarterly Census of Employment and Wages, provided by the Bureau of Labor Statistics and currently updated through 2021Q1, imputed where necessary with preliminary estimates updated to 2021Q2. Wages by occupation are as of 2020 provided by the BLS and imputed where necessary. Forecast employment growth uses national projections from the Bureau of Labor Statistics adapted for regional growth patterns.

# Industry Clusters

A cluster is a geographic concentration of interrelated industries or occupations. The industry cluster in the Gateway Industrial Site 45 minute drive-time (county level) with the highest relative concentration is Wood/Paper with a location quotient of 3.30. This cluster employs 4,234 workers in the region with an average wage of \$50,566. Employment in the Wood/Paper cluster is projected to contract in the region about 1.5% per year over the next ten years.

Industry Clusters for Gateway Industrial Site 45 minute drive-time (county level) as of 2021Q2



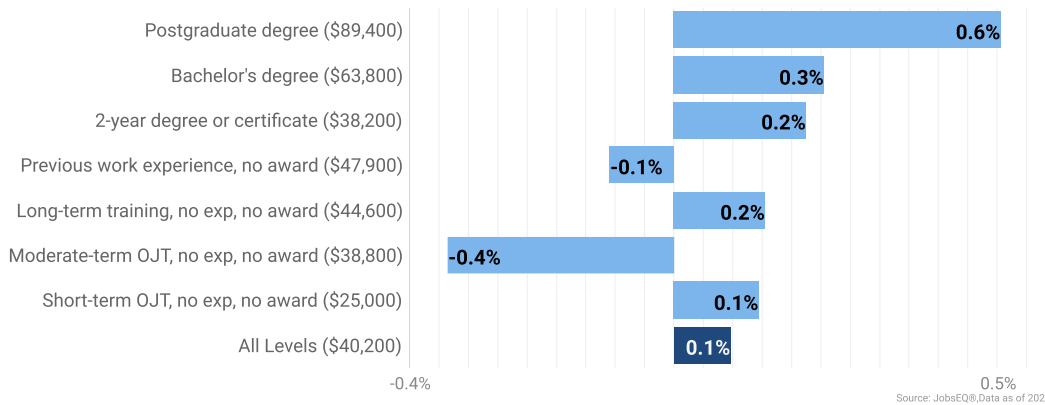
Source: JobsEQ®, Data as of 2021Q2

Location quotient and average wage data are derived from the Quarterly Census of Employment and Wages, provided by the Bureau of Labor Statistics, imputed where necessary, and updated through 2021Q1 with preliminary estimates updated to 2021Q2. Forecast employment growth uses national projections from the Bureau of Labor Statistics adapted for regional growth patterns.

# Education Levels

Expected growth rates for occupations vary by the education and training required. While all employment in the Gateway Industrial Site 45 minute drive-time (county level) is projected to grow 0.1% over the next ten years, occupations typically requiring a postgraduate degree are expected to grow 0.6% per year, those requiring a bachelor's degree are forecast to grow 0.3% per year, and occupations typically needing a 2-year degree or certificate are expected to grow 0.2% per year.

Annual Average Projected Job Growth by Training Required for Gateway Industrial Site 45 minute drive-time (county level)

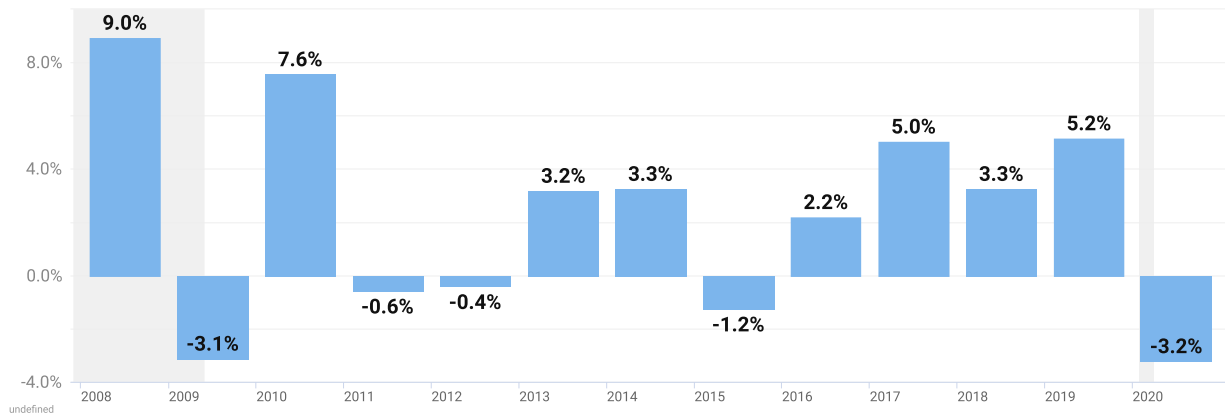


Employment by occupation data are estimates as of 2021Q2. Education levels of occupations are based on BLS assignments. Forecast employment growth uses national projections from the Bureau of Labor Statistics adapted for regional growth patterns.

# Gross Domestic Product

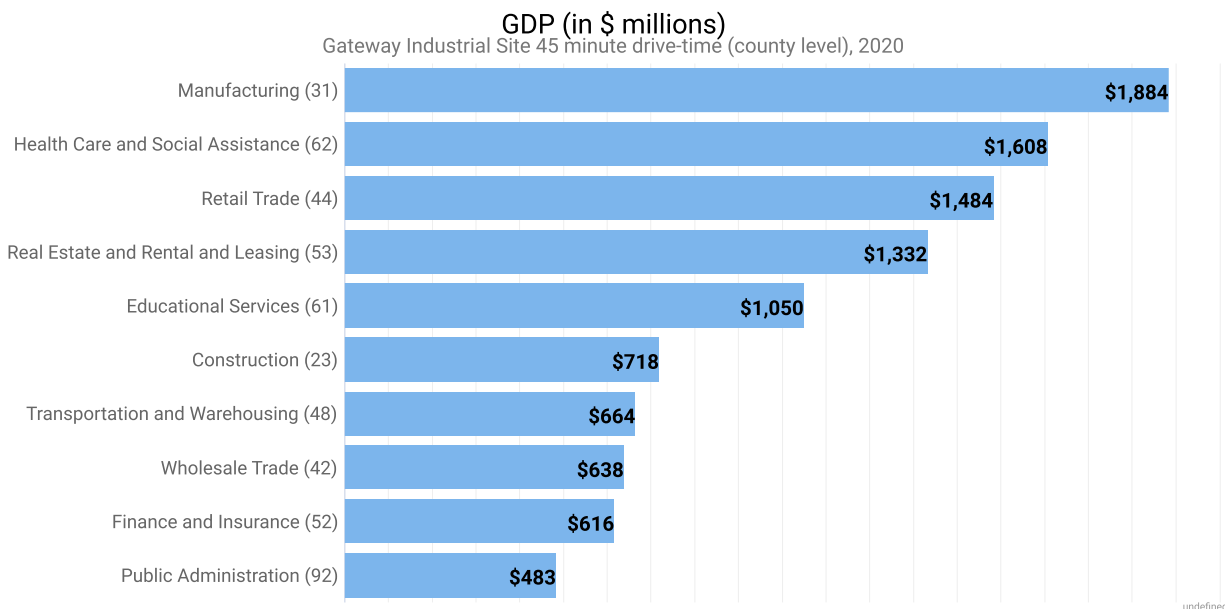
Gross Domestic Product (GDP) is the total value of goods and services produced by a region. In 2020, nominal GDP in the Gateway Industrial Site 45 minute drive-time (county level) contracted 3.2%. This follows growth of 5.2% in 2019. As of 2020, total GDP in the Gateway Industrial Site 45 minute drive-time (county level) was \$13,098,813,000.

1 year % Change in GDP



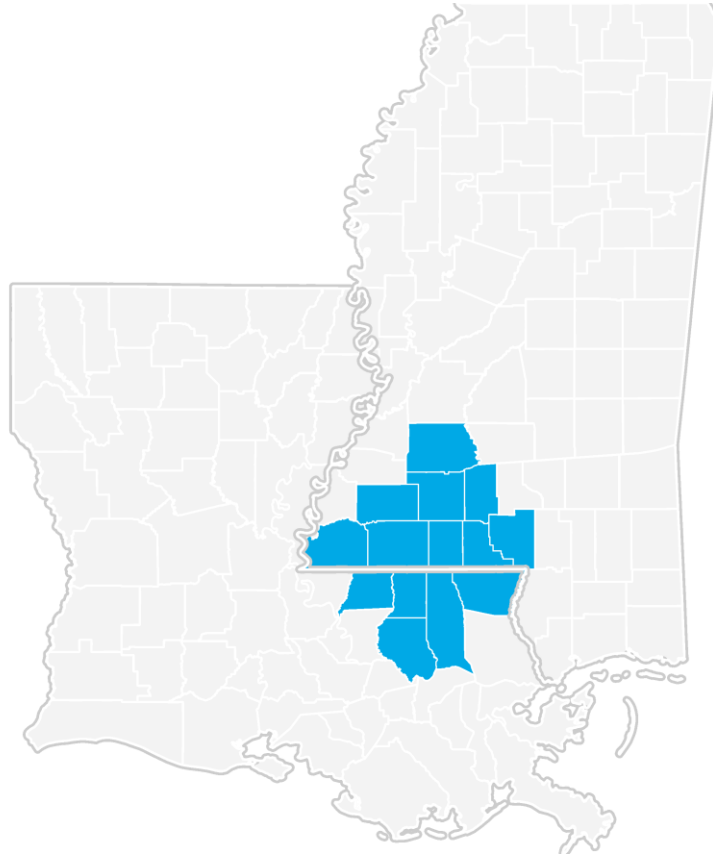
Gross Domestic Product data are provided by the Bureau of Economic Analysis, imputed by Chmura where necessary, updated through 2020.

Of the sectors in the Gateway Industrial Site 45 minute drive-time (county level), Manufacturing contributed the largest portion of GDP in 2020, \$1,884,242,000. The next-largest contributions came from Health Care and Social Assistance (\$1,608,309,000); Retail Trade (\$1,483,591,000); and Real Estate and Rental and Leasing (\$1,332,148,000).



Gross Domestic Product data are provided by the Bureau of Economic Analysis, imputed by Chmura where necessary, updated through 2020.

# Gateway Industrial Site 45 minute drive-time (county level) Regional Map



# Region Definition

**Gateway Industrial Site 45 minute drive-time (county level) is defined as the following counties:**

East Feliciana Parish, Louisiana

---

Livingston Parish, Louisiana

---

St. Helena Parish, Louisiana

---

Tangipahoa Parish, Louisiana

---

Washington Parish, Louisiana

---

Amite County, Mississippi

---

Copiah County, Mississippi

---

Franklin County, Mississippi

---

Lawrence County, Mississippi

---

Lincoln County, Mississippi

---

Marion County, Mississippi

---

Pike County, Mississippi

---

Walthall County, Mississippi

---

Wilkinson County, Mississippi

---



# FAQ

## What is a location quotient?

A location quotient (LQ) is a measurement of concentration in comparison to the nation. An LQ of 1.00 indicates a region has the same concentration of an industry (or occupation) as the nation. An LQ of 2.00 would mean the region has twice the expected employment compared to the nation and an LQ of 0.50 would mean the region has half the expected employment in comparison to the nation.

## What is separation demand?

Separation demand is the number of jobs required due to separations—labor force exits (including retirements) and turnover resulting from workers moving from one occupation into another. Note that separation demand does not include all turnover—it does not include when workers stay in the same occupation but switch employers. The total projected demand for an occupation is the sum of the separation demand and the growth demand (which is the increase or decrease of jobs in an occupation expected due to expansion or contraction of the overall number of jobs in that occupation).

## What is a cluster?

A cluster is a geographic concentration of interrelated industries or occupations. If a regional cluster has a location quotient of 1.25 or greater, the region is considered to possess a competitive advantage in that cluster.

## What is the difference between industry wages and occupation wages?

Industry wages and occupation wages are estimated via separate data sets, often the time periods being reported do not align, and wages are defined slightly differently in the two systems (for example, certain bonuses are included in the industry wages but not the occupation wages). It is therefore common that estimates of the average industry wages and average occupation wages in a region do not match exactly.

## What is NAICS?

The North American Industry Classification System (NAICS) is used to classify business establishments according to the type of economic activity. The NAICS Code comprises six levels, from the “all industry” level to the 6-digit level. The first two digits define the top level category, known as the “sector,” which is the level examined in this report.

## What is SOC?

The Standard Occupational Classification system (SOC) is used to classify workers into occupational categories. All workers are classified into one of over 804 occupations according to their occupational definition. To facilitate classification, occupations are combined to form 22 major groups, 95 minor groups, and 452 occupation groups. Each occupation group includes detailed occupations requiring similar job duties, skills, education, or experience.

### About This Report

This report and all data herein were produced by JobsEQ®, a product of Chmura Economics & Analytics. The information contained herein was obtained from sources we believe to be reliable. However, we cannot guarantee its accuracy and completeness.