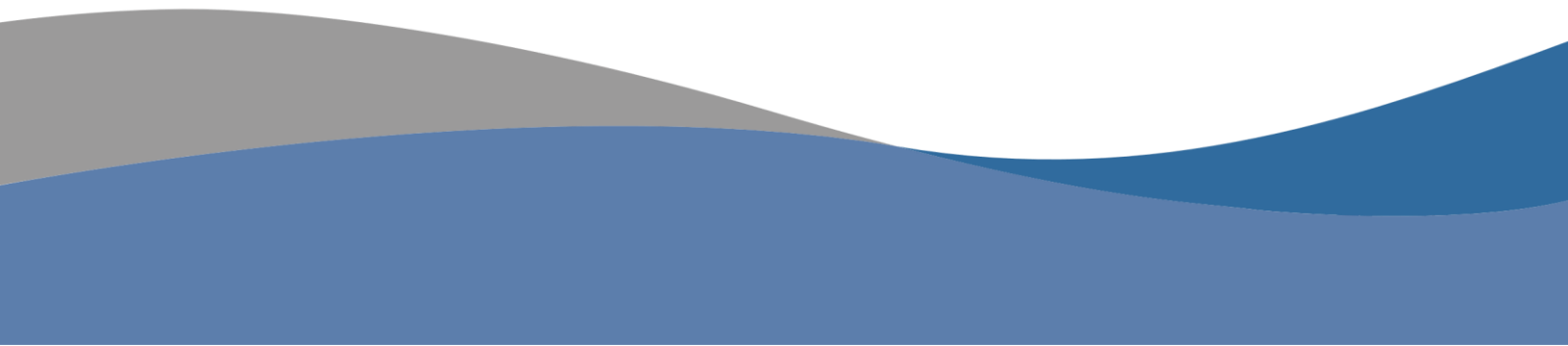




Economic Overview

Port Bienville 45 minute drive-time (ZCTA)



Demographic Profile..... 3

Employment Trends 5

Wage Trends 5

Cost of Living Index 6

Industry Snapshot 7

Occupation Snapshot 9

Industry Clusters 11

Education Levels..... 12

Port Bienville 45 minute drive-time (ZCTA) Regional Map 13

Region Definition..... 14

FAQ..... 15

Demographic Profile

The population in the Port Bienville 45 minute drive-time (ZCTA)* was 462,627 per American Community Survey data for 2014-2018.

The region has a civilian labor force of 215,802 with a participation rate of 59.8%. Of individuals 25 to 64 in the Port Bienville 45 minute drive-time (ZCTA)*, 26.5% have a bachelor's degree or higher which compares with 32.9% in the nation.

The median household income in the Port Bienville 45 minute drive-time (ZCTA)* is \$54,095 and the median house value is \$173,542.

Summary¹

	Percent			Value		
	Proxy for Port Bienville 45 minute drive-time (ZCTA)*	Mississippi	USA	Proxy for Port Bienville 45 minute drive-time (ZCTA)*	Mississippi	USA
Demographics						
Population (ACS)	—	—	—	462,627	2,988,762	322,903,030
Male	48.3%	48.5%	49.2%	223,395	1,450,379	158,984,190
Female	51.7%	51.5%	50.8%	239,232	1,538,383	163,918,840
Median Age ²	—	—	—	39.1	37.2	37.9
Under 18 Years	24.1%	24.1%	22.8%	111,679	720,308	73,553,240
18 to 24 Years	8.6%	10.1%	9.6%	39,689	301,140	30,903,719
25 to 34 Years	12.7%	13.0%	13.8%	58,826	388,763	44,567,976
35 to 44 Years	12.1%	12.4%	12.6%	55,904	370,914	40,763,210
45 to 54 Years	13.3%	12.7%	13.2%	61,423	378,273	42,589,573
55 to 64 Years	13.8%	12.7%	12.8%	63,650	379,886	41,286,731
65 to 74 Years	9.5%	8.9%	8.8%	44,179	265,521	28,535,419
75 Years, and Over	5.9%	6.2%	6.4%	27,277	183,957	20,703,162
Race: White	68.9%	58.6%	72.7%	318,649	1,751,193	234,904,818
Race: Black or African American	25.0%	37.7%	12.7%	115,873	1,125,834	40,916,113
Race: American Indian and Alaska Native	0.4%	0.5%	0.8%	1,975	13,689	2,699,073
Race: Asian	2.5%	0.9%	5.4%	11,454	28,313	17,574,550
Race: Native Hawaiian and Other Pacific Islander	0.0%	0.0%	0.2%	167	707	582,718
Race: Some Other Race	1.1%	1.0%	4.9%	4,919	28,833	15,789,961
Race: Two or More Races	2.1%	1.3%	3.2%	9,590	40,193	10,435,797
Hispanic or Latino (of any race)	4.8%	3.0%	17.8%	22,362	90,493	57,517,935
Economic						
Labor Force Participation Rate and Size (civilian population 16 years and over) ⁵	59.8%	57.2%	63.2%	215,802	1,338,573	162,248,196
Prime-Age Labor Force Participation Rate and Size (civilian population 25-54) ⁵	79.2%	76.6%	81.8%	138,012	867,939	104,136,254
Armed Forces Labor Force ⁵	0.7%	0.5%	0.4%	2,583	10,767	1,028,133
Veterans, Age 18-64 ⁵	7.4%	5.1%	4.7%	20,504	91,862	9,398,789
Veterans Labor Force Participation Rate and Size, Age 18-64 ⁵	75.8%	72.7%	76.3%	15,552	66,754	7,168,168
Median Household Income ^{2,5}	—	—	—	\$54,095	\$43,567	\$60,293
Per Capita Income ⁵	—	—	—	\$28,046	\$23,434	\$32,621
Mean Commute Time (minutes) ⁵	—	—	—	28.9	24.6	26.6
Commute via Public Transportation ⁵	0.9%	0.3%	5.0%	1,737	3,393	7,602,145
Educational Attainment, Age 25-64						
No High School Diploma	11.7%	14.1%	11.2%	27,986	213,595	18,885,967
High School Graduate	27.3%	29.8%	25.8%	65,480	452,179	43,699,272

Summary¹

	Percent			Value		
	Proxy for Port Bienville 45 minute drive-time (ZCTA)*	Mississippi	USA	Proxy for Port Bienville 45 minute drive-time (ZCTA)*	Mississippi	USA
Some College, No Degree	26.0%	23.2%	21.0%	62,229	351,613	35,525,113
Associate's Degree	8.6%	10.6%	9.1%	20,505	160,389	15,389,737
Bachelor's Degree	17.9%	14.3%	20.8%	42,900	217,551	35,261,652
Postgraduate Degree	8.6%	8.1%	12.1%	20,703	122,509	20,445,749
Housing						
Total Housing Units	—	—	—	199,725	1,316,108	136,384,292
Median House Value (of owner-occupied units) ²	—	—	—	\$173,542	\$114,500	\$204,900
Homeowner Vacancy	2.3%	2.0%	1.7%	2,900	15,771	1,304,850
Rental Vacancy	9.5%	9.5%	6.0%	5,643	37,625	2,822,053
Renter-Occupied Housing Units (% of Occupied Units)	30.6%	31.8%	36.2%	53,094	351,558	43,285,318
Occupied Housing Units with No Vehicle Available (% of Occupied Units) ⁵	5.9%	6.5%	8.7%	10,274	71,851	10,424,934
Social						
Poverty Level (of all people) ⁵	17.1%	20.8%	14.1%	78,197	599,795	44,257,979
Households Receiving Food Stamps/SNAP	15.1%	16.5%	12.2%	26,219	182,088	14,635,287
Enrolled in Grade 12 (% of total population)	1.3%	1.3%	1.4%	6,233	39,499	4,442,295
Disconnected Youth ^{3,5}	4.1%	4.1%	2.6%	956	6,946	438,452
Children in Single Parent Families (% of all children) ⁵	42.7%	45.8%	34.3%	44,928	307,271	23,973,249
Uninsured	12.0%	12.7%	9.4%	54,723	370,357	29,752,767
With a Disability, Age 18-64 ⁵	13.7%	14.7%	10.3%	37,666	260,090	20,240,504
With a Disability, Age 18-64, Labor Force Participation Rate and Size ⁵	39.3%	33.4%	41.6%	14,797	86,974	8,421,018
Foreign Born	4.1%	2.3%	13.5%	18,829	69,752	43,539,499
Speak English Less Than Very Well (population 5 yrs and over)	2.7%	1.6%	8.5%	11,788	45,322	25,647,781

Source: [JobsEQ®](#)

1. American Community Survey 2014-2018, unless noted otherwise

2. Median values for certain aggregate regions (such as MSAs) may be estimated as the weighted averages of the median values from the composing counties.

3. Disconnected Youth are 16-19 year olds who are (1) not in school, (2) not high school graduates, and (3) either unemployed or not in the labor force.

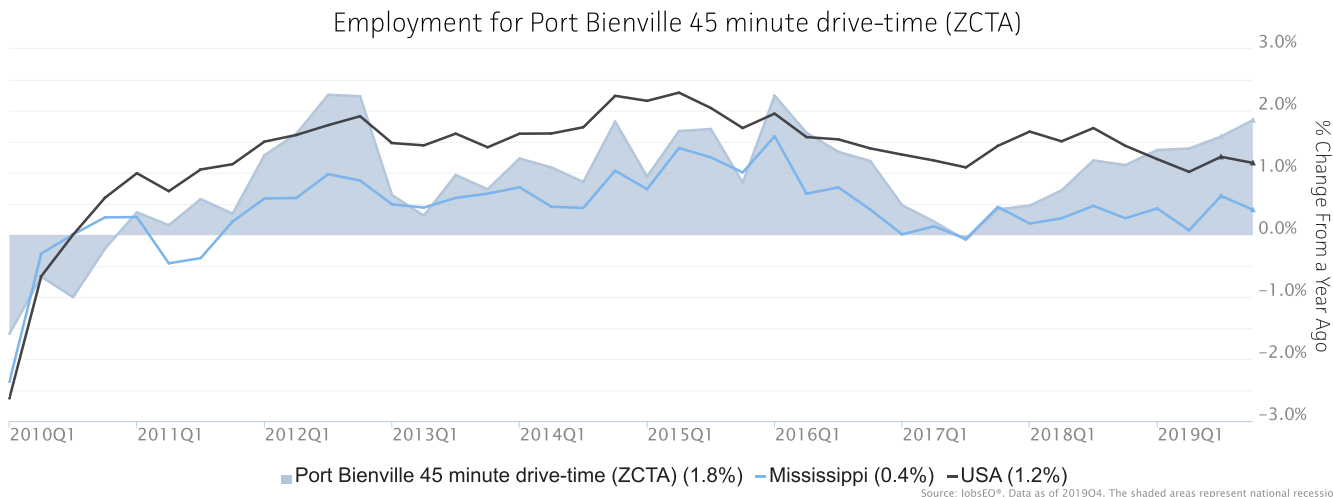
4. Census 2019, annual average growth rate since 2009

5. See Rio Arriba errata note in the Data Dictionary.

* This user-defined region contains one or more partial ZCTA areas. Any such partial ZCTA within this region definition has been replaced by the full ZCTA for purposes of being described via the above data.

Employment Trends

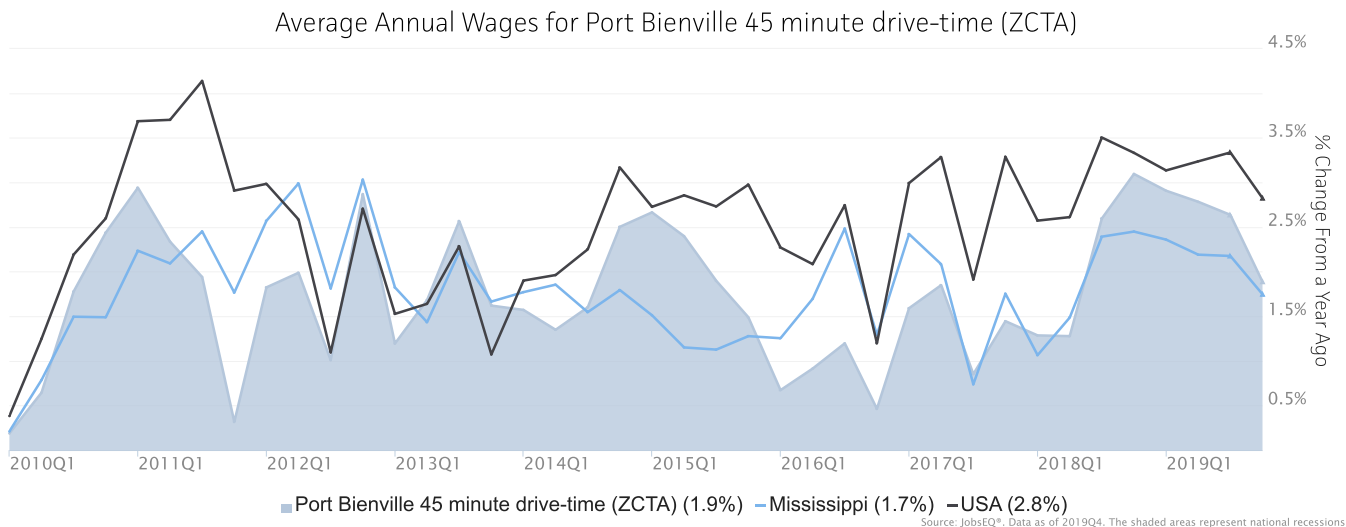
As of 2019Q4, total employment for the Port Bienville 45 minute drive-time (ZCTA) was 176,508 (based on a four-quarter moving average). Over the year ending 2019Q4, employment increased 1.8% in the region.



Employment data are derived from the Quarterly Census of Employment and Wages, provided by the Bureau of Labor Statistics and imputed where necessary. Data are updated through 2019Q2 with preliminary estimates updated to 2019Q4.

Wage Trends

The average worker in the Port Bienville 45 minute drive-time (ZCTA) earned annual wages of \$44,546 as of 2019Q4. Average annual wages per worker increased 1.9% in the region over the preceding four quarters. For comparison purposes, annual average wages were \$57,413 in the nation as of 2019Q4.



Annual average wages per worker data are derived from the Quarterly Census of Employment and Wages, provided by the Bureau of Labor Statistics and imputed where necessary. Data are updated through 2019Q2 with preliminary estimates updated to 2019Q4.

Cost of Living Index

The Cost of Living Index estimates the relative price levels for consumer goods and services. When applied to wages and salaries, the result is a measure of relative purchasing power. The cost of living is 1.8% higher in Port Bienville 45 minute drive-time (ZCTA) than the U.S. average.

Cost of Living Information

	Annual Average Salary	Cost of Living Index (Base US)	US Purchasing Power
Port Bienville 45 minute drive-time (ZCTA)	\$44,546	101.8	\$43,756
Mississippi	\$39,614	84.6	\$46,821
USA	\$57,413	100.0	\$57,413

Source: [JobsEQ®](#)

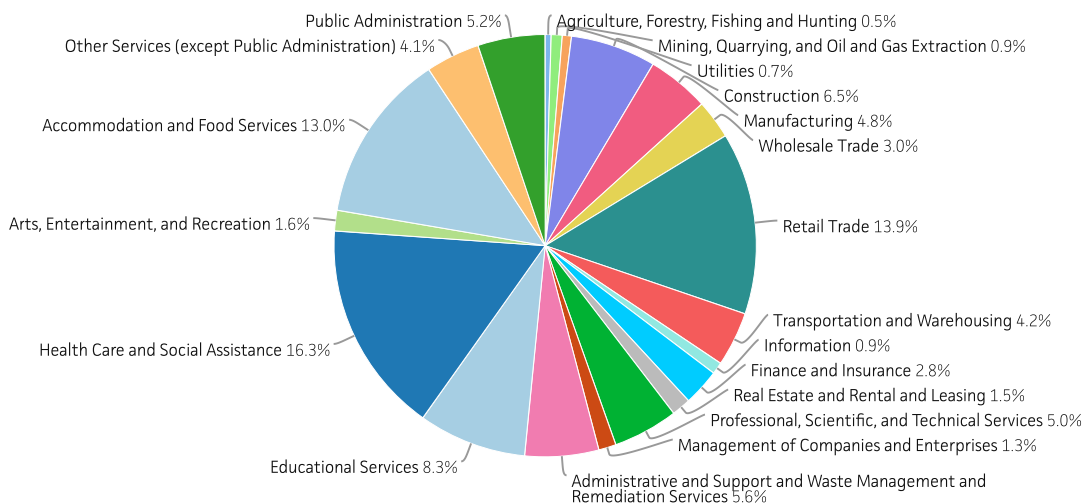
Data as of 2019Q4

Cost of Living per C2ER, data as of 2019q4, imputed by Chmura where necessary.

Industry Snapshot

The largest sector in the Port Bienville 45 minute drive-time (ZCTA) is Health Care and Social Assistance, employing 28,744 workers. The next-largest sectors in the region are Retail Trade (24,616 workers) and Accommodation and Food Services (22,979). High location quotients (LQs) indicate sectors in which a region has high concentrations of employment compared to the national average. The sectors with the largest LQs in the region are Mining, Quarrying, and Oil and Gas Extraction (LQ = 1.94), Accommodation and Food Services (1.44), and Utilities (1.37).

Total Workers for Port Bienville 45 minute drive-time (ZCTA) by Industry



Source: JobsEQ®, Data as of 2019Q4

Employment data are derived from the Quarterly Census of Employment and Wages, provided by the Bureau of Labor Statistics and imputed where necessary. Data are updated through 2019Q2 with preliminary estimates updated to 2019Q4.

Sectors in the Port Bienville 45 minute drive-time (ZCTA) with the highest average wages per worker are Mining, Quarrying, and Oil and Gas Extraction (\$161,438), Utilities (\$101,062), and Wholesale Trade (\$82,390). Regional sectors with the best job growth (or most moderate job losses) over the last 5 years are Accommodation and Food Services (+3,545 jobs), Health Care and Social Assistance (+3,465), and Transportation and Warehousing (+1,818).

Over the next 1 year, employment in the Port Bienville 45 minute drive-time (ZCTA) is projected to expand by 1,069 jobs. The fastest growing sector in the region is expected to be Health Care and Social Assistance with a +1.4% year-over-year rate of growth. The strongest forecast by number of jobs over this period is expected for Health Care and Social Assistance (+408 jobs), Accommodation and Food Services (+245), and Construction (+120).

NAICS	Industry	Current			5-Year History		1-Year Forecast				
		Empl	Avg Ann Wages	LQ	Empl Change	Ann %	Total Demand	Exits	Transfers	Empl Growth	Ann % Growth
62	Health Care and Social Assistance	28,744	\$49,713	1.13	3,465	2.6%	3,126	1,336	1,382	408	1.4%
44	Retail Trade	24,616	\$28,209	1.36	629	0.5%	3,252	1,452	1,833	-32	-0.1%
72	Accommodation and Food Services	22,979	\$20,485	1.44	3,545	3.4%	3,970	1,649	2,077	245	1.1%
61	Educational Services	14,613	\$42,249	1.02	1,112	1.6%	1,445	651	702	91	0.6%
23	Construction	11,558	\$49,445	1.14	251	0.4%	1,257	408	729	120	1.0%
56	Administrative and Support and Waste Management and Remediation Services	9,964	\$34,693	0.88	807	1.7%	1,212	487	663	62	0.6%
92	Public Administration	9,096	\$56,874	1.10	-1,729	-3.4%	840	353	480	6	0.1%
54	Professional, Scientific, and Technical Services	8,801	\$65,850	0.74	354	0.8%	847	281	474	92	1.0%
31	Manufacturing	8,399	\$60,550	0.58	-1,006	-2.2%	823	322	551	-50	-0.6%
48	Transportation and Warehousing	7,354	\$55,577	0.91	1,818	5.8%	790	333	450	8	0.1%
81	Other Services (except Public Administration)	7,294	\$28,305	0.93	305	0.9%	856	379	452	24	0.3%
42	Wholesale Trade	5,266	\$82,390	0.79	322	1.3%	556	208	345	3	0.1%
52	Finance and Insurance	4,975	\$68,358	0.71	-7	0.0%	486	176	289	21	0.4%
71	Arts, Entertainment, and Recreation	2,768	\$21,596	0.78	-659	-4.2%	414	174	215	25	0.9%
53	Real Estate and Rental and Leasing	2,598	\$41,955	0.85	185	1.5%	277	120	143	14	0.5%
55	Management of Companies and Enterprises	2,359	\$81,787	0.88	604	6.1%	226	79	134	13	0.6%
51	Information	1,597	\$53,101	0.46	92	1.2%	147	56	98	-7	-0.4%
21	Mining, Quarrying, and Oil and Gas Extraction	1,501	\$161,438	1.94	-334	-3.9%	152	50	103	-1	0.0%
22	Utilities	1,231	\$101,062	1.37	-205	-3.0%	110	40	71	-1	-0.1%
11	Agriculture, Forestry, Fishing and Hunting	798	\$21,219	0.34	4	0.1%	86	37	50	0	0.0%
99	Unclassified	0	n/a	0.00	-39	n/a	0	0	0	0	
Total - All Industries		176,508	\$44,546	1.00	9,513	1.1%	20,332	8,237	11,027	1,069	0.6%

Source: [JobsEQ®](#)

Employment data are derived from the Quarterly Census of Employment and Wages, provided by the Bureau of Labor Statistics and imputed where necessary. Data are updated through 2019Q2 with preliminary estimates updated to 2019Q4. Forecast employment growth uses national projections adapted for regional growth patterns.

Occupation Snapshot

The largest major occupation group in the Port Bienville 45 minute drive-time (ZCTA) is Office and Administrative Support Occupations, employing 23,706 workers. The next-largest occupation groups in the region are Sales and Related Occupations (20,689 workers) and Food Preparation and Serving Related Occupations (19,088). High location quotients (LQs) indicate occupation groups in which a region has high concentrations of employment compared to the national average. The major groups with the largest LQs in the region are Healthcare Practitioners and Technical Occupations (LQ = 1.28), Food Preparation and Serving Related Occupations (1.26), and Sales and Related Occupations (1.19).

Occupation groups in the Port Bienville 45 minute drive-time (ZCTA) with the highest average wages per worker are Legal Occupations (\$93,400), Management Occupations (\$89,800), and Architecture and Engineering Occupations (\$83,500). The unemployment rate in the region varied among the major groups from 1.5% among Legal Occupations to 10.7% among Farming, Fishing, and Forestry Occupations.

Over the next 1 year, the fastest growing occupation group in the Port Bienville 45 minute drive-time (ZCTA) is expected to be Personal Care and Service Occupations with a +1.7% year-over-year rate of growth. The strongest forecast by number of jobs over this period is expected for Food Preparation and Serving Related Occupations (+216 jobs) and Healthcare Practitioners and Technical Occupations (+144). Over the same period, the highest separation demand (occupation demand due to retirements and workers moving from one occupation to another) is expected in Food Preparation and Serving Related Occupations (3,316 jobs) and Sales and Related Occupations (2,910).

Port Bienville 45 minute drive-time (ZCTA), 2019Q4¹

SOC	Occupation	Current					5-Year History			1-Year Forecast				
		Empl	Avg Ann Wages ²	LQ	Unempl	Unempl Rate	Online Job Ads ³	Empl Change	Ann %	Total Demand	Exits	Transfers	Empl Growth	Ann % Growth
43-0000	Office and Administrative Support	23,706	\$33,600	0.94	1,261	4.4%	653	474	0.4%	2,566	1,216	1,401	-51	-0.2%
41-0000	Sales and Related	20,689	\$33,400	1.19	1,309	5.8%	1,335	616	0.6%	2,904	1,302	1,608	-6	0.0%
35-0000	Food Preparation and Serving Related	19,088	\$20,800	1.26	1,742	7.3%	860	1,943	2.2%	3,533	1,457	1,859	216	1.1%
29-0000	Healthcare Practitioners and Technical	13,007	\$69,400	1.28	278	2.0%	964	1,481	2.4%	864	362	358	144	1.1%
53-0000	Transportation and Material Moving	11,974	\$35,800	0.97	820	6.1%	451	1,582	2.9%	1,487	571	866	49	0.4%
25-0000	Education, Training, and Library	10,923	\$41,600	1.11	415	3.5%	110	786	1.5%	1,022	479	461	82	0.7%
11-0000	Management	9,959	\$89,800	0.91	233	2.1%	259	859	1.8%	868	271	518	79	0.8%
47-0000	Construction and Extraction	9,062	\$41,900	1.12	668	6.7%	128	-354	-0.8%	1,044	328	626	90	1.0%
39-0000	Personal Care and Service	7,967	\$23,400	1.03	482	5.0%	162	1,317	3.7%	1,347	615	596	136	1.7%
49-0000	Installation, Maintenance, and Repair	7,545	\$43,800	1.11	285	3.4%	289	391	1.1%	749	266	453	31	0.4%
51-0000	Production	7,204	\$41,400	0.69	405	5.1%	122	-591	-1.6%	771	291	506	-25	-0.3%
37-0000	Building and Grounds Cleaning and Maintenance	6,621	\$24,100	1.09	540	6.6%	215	274	0.8%	893	415	430	48	0.7%
13-0000	Business and Financial Operations	6,470	\$63,500	0.70	222	2.9%	163	282	0.9%	625	197	382	46	0.7%
31-0000	Healthcare Support	5,429	\$27,100	1.12	234	3.7%	212	266	1.0%	731	319	325	87	1.6%
33-0000	Protective Service	4,139	\$36,900	1.09	186	3.4%	71	13	0.1%	431	193	224	13	0.3%
21-0000	Community and Social Service	2,879	\$42,900	0.96	77	2.5%	135	158	1.1%	366	123	202	41	1.4%

Port Bienville 45 minute drive-time (ZCTA), 2019Q4¹

SOC	Occupation	Current						5-Year History		1-Year Forecast				
		Empl	Avg Ann Wages ²	LQ	Unempl	Unempl Rate	Online Job Ads ³	Empl Change	Ann %	Total Demand	Exits	Transfers	Empl Growth	Ann % Growth
17-0000	Architecture and Engineering	2,387	\$83,500	0.79	87	2.7%	61	-350	-2.7%	182	61	111	9	0.4%
15-0000	Computer and Mathematical	2,370	\$69,200	0.46	77	2.8%	250	288	2.6%	186	43	117	26	1.1%
27-0000	Arts, Design, Entertainment, Sports, and Media	2,180	\$46,300	0.69	143	4.9%	54	159	1.5%	221	94	118	10	0.4%
23-0000	Legal	1,443	\$93,400	0.99	28	1.5%	22	14	0.2%	98	36	52	10	0.7%
19-0000	Life, Physical, and Social Science	1,130	\$70,700	0.80	34	2.6%	38	-109	-1.8%	104	30	70	5	0.4%
45-0000	Farming, Fishing, and Forestry	336	\$41,500	0.30	51	10.7%	16	16	1.0%	43	12	31	0	0.0%
Total - All Occupations		176,508	\$41,900	1.00	9,576	4.7%	6,570	9,513	1.1%	21,065	8,680	11,316	1,069	0.6%

Source: [JobsEQ®](#)

Data as of 2019Q4 unless noted otherwise

Note: Figures may not sum due to rounding.

1. Data based on a four-quarter moving average unless noted otherwise.

2. Wage data are as of 2018 and represent the average for all Covered Employment

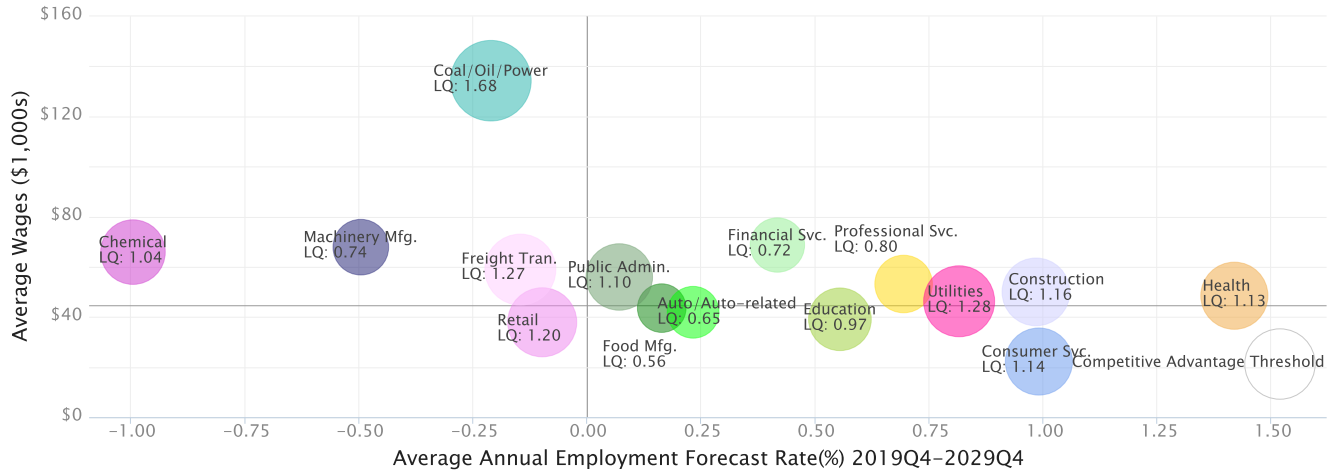
3. Data represent found online ads active within the last thirty days in the selected region; data represents a sampling rather than the complete universe of postings. Ads lacking zip code information but designating a place (city, town, etc.) may be assigned to the zip code with greatest employment in that place for queries in this analytic. Due to alternative county-assignment algorithms, ad counts in this analytic may not match that shown in RTI (nor in the popup window ad list).

Occupation employment data are estimated via industry employment data and the estimated industry/occupation mix. Industry employment data are derived from the Quarterly Census of Employment and Wages, provided by the Bureau of Labor Statistics and currently updated through 2019Q2, imputed where necessary with preliminary estimates updated to 2019Q4. Wages by occupation are as of 2018 provided by the BLS and imputed where necessary. Forecast employment growth uses national projections from the Bureau of Labor Statistics adapted for regional growth patterns.

Industry Clusters

A cluster is a geographic concentration of interrelated industries or occupations. The industry cluster in the Port Bienville 45 minute drive-time (ZCTA) with the highest relative concentration is Coal/Oil/Power with a location quotient of 1.68. This cluster employs 2,634 workers in the region with an average wage of \$134,287. Employment in the Coal/Oil/Power cluster is projected to contract in the region about 0.2% per year over the next ten years.

Industry Clusters for Port Bienville 45 minute drive-time (ZCTA) as of 2019Q4



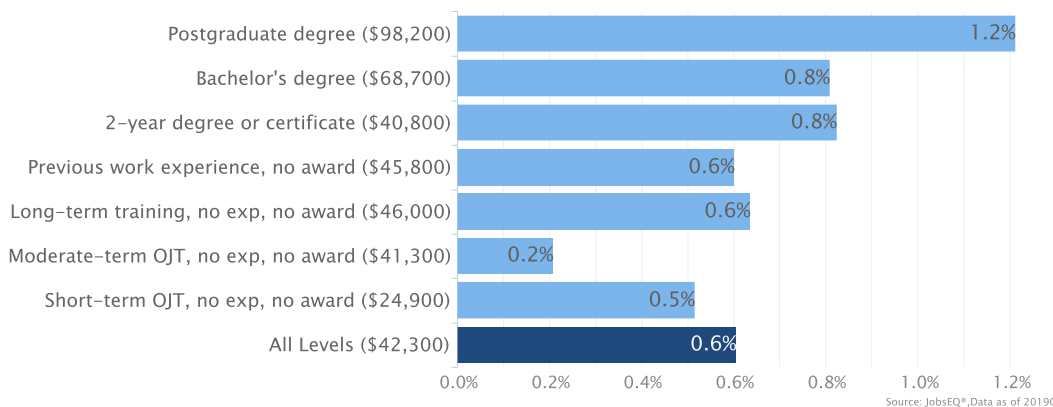
Source: JobsEQ®, Data as of 2019Q4

Location quotient and average wage data are derived from the Quarterly Census of Employment and Wages, provided by the Bureau of Labor Statistics, imputed where necessary, and updated through 2019Q2 with preliminary estimates updated to 2019Q4. Forecast employment growth uses national projections from the Bureau of Labor Statistics adapted for regional growth patterns.

Education Levels

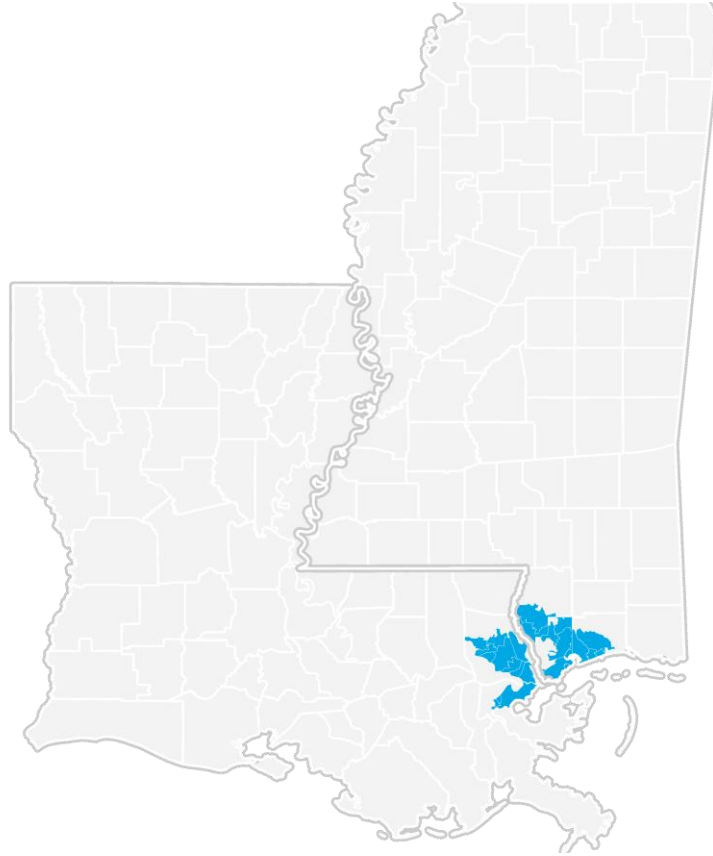
Expected growth rates for occupations vary by the education and training required. While all employment in the Port Bienville 45 minute drive-time (ZCTA) is projected to grow 0.6% over the next ten years, occupations typically requiring a postgraduate degree are expected to grow 1.2% per year, those requiring a bachelor’s degree are forecast to grow 0.8% per year, and occupations typically needing a 2-year degree or certificate are expected to grow 0.8% per year.

Annual Average Projected Job Growth by Training Required for Port Bienville 45 minute drive-time (ZCTA)



Employment by occupation data are estimates as of 2019Q4. Education levels of occupations are based on BLS assignments. Forecast employment growth uses national projections from the Bureau of Labor Statistics adapted for regional growth patterns.

Port Bienville 45 minute drive-time (ZCTA) Regional Map



Region Definition

Port Bienville 45 minute drive-time (ZCTA) is defined as the following zip code tabulation areas:

ZCTA 39426 (Pearl River County, MS portion)	ZCTA 39576
ZCTA 39466 (Hancock County, MS portion)	ZCTA 70127
ZCTA 39466 (Pearl River County, MS portion)	ZCTA 70128
ZCTA 39501	ZCTA 70129
ZCTA 39503	ZCTA 70420
ZCTA 39520	ZCTA 70433 (St. Tammany Parish, LA portion)
ZCTA 39525	ZCTA 70445
ZCTA 39556	ZCTA 70448
ZCTA 39560	ZCTA 70452
ZCTA 39571 (Hancock County, MS portion)	ZCTA 70458
ZCTA 39571 (Harrison County, MS portion)	ZCTA 70460
ZCTA 39572	ZCTA 70461
ZCTA 39573 (Hancock County, MS portion)	ZCTA 70471

FAQ

What is a location quotient?

A location quotient (LQ) is a measurement of concentration in comparison to the nation. An LQ of 1.00 indicates a region has the same concentration of an industry (or occupation) as the nation. An LQ of 2.00 would mean the region has twice the expected employment compared to the nation and an LQ of 0.50 would mean the region has half the expected employment in comparison to the nation.

What is separation demand?

Separation demand is the number of jobs required due to separations—labor force exits (including retirements) and turnover resulting from workers moving from one occupation into another. Note that separation demand does not include all turnover—it does not include when workers stay in the same occupation but switch employers. The total projected demand for an occupation is the sum of the separation demand and the growth demand (which is the increase or decrease of jobs in an occupation expected due to expansion or contraction of the overall number of jobs in that occupation).

What is a cluster?

A cluster is a geographic concentration of interrelated industries or occupations. If a regional cluster has a location quotient of 1.25 or greater, the region is considered to possess a competitive advantage in that cluster.

What is the difference between industry wages and occupation wages?

Industry wages and occupation wages are estimated via separate data sets, often the time periods being reported do not align, and wages are defined slightly differently in the two systems (for example, certain bonuses are included in the industry wages but not the occupation wages). It is therefore common that estimates of the average industry wages and average occupation wages in a region do not match exactly.

What is NAICS?

The North American Industry Classification System (NAICS) is used to classify business establishments according to the type of economic activity. The NAICS Code comprises six levels, from the “all industry” level to the 6-digit level. The first two digits define the top level category, known as the “sector,” which is the level examined in this report.

What is SOC?

The Standard Occupational Classification system (SOC) is used to classify workers into occupational categories. All workers are classified into one of over 820 occupations according to their occupational definition. To facilitate classification, occupations are combined to form 23 major groups, 96 minor groups, and 449 occupation groups. Each occupation group includes detailed occupations requiring similar job duties, skills, education, or experience.

About This Report

This report and all data herein were produced by JobsEQ®, a product of Chmura Economics & Analytics. The information contained herein was obtained from sources we believe to be reliable. However, we cannot guarantee its accuracy and completeness.